

Fireplace and Venting Specifications

for
architects
&
designers

IMPORTANT

This booklet is intended as a basic specification guide for architects, designers and builders. Please refer to the Instruction Manual supplied with the fireplace for detailed information regarding installation and operation.

Product installation manuals can also be viewed at:

www.townandcountryfireplaces.com



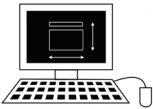
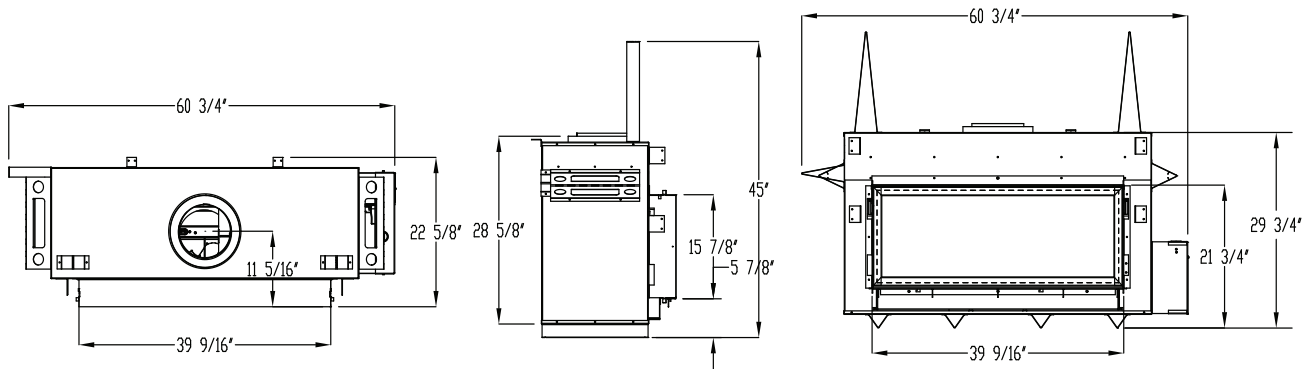
TOWN & COUNTRY
LUXURY FIREPLACES™

TCWS.38CE2 Series C MODULAR DIRECT VENT FIREPLACE



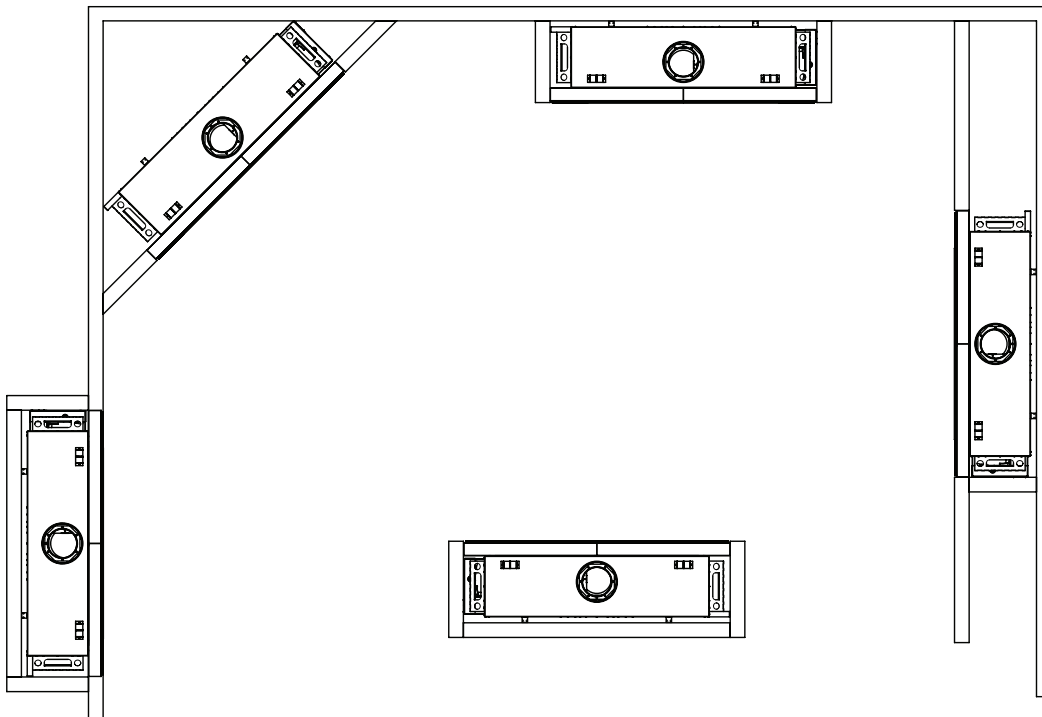
Model TCWS.38CE Series C

Fireplace Dimensions



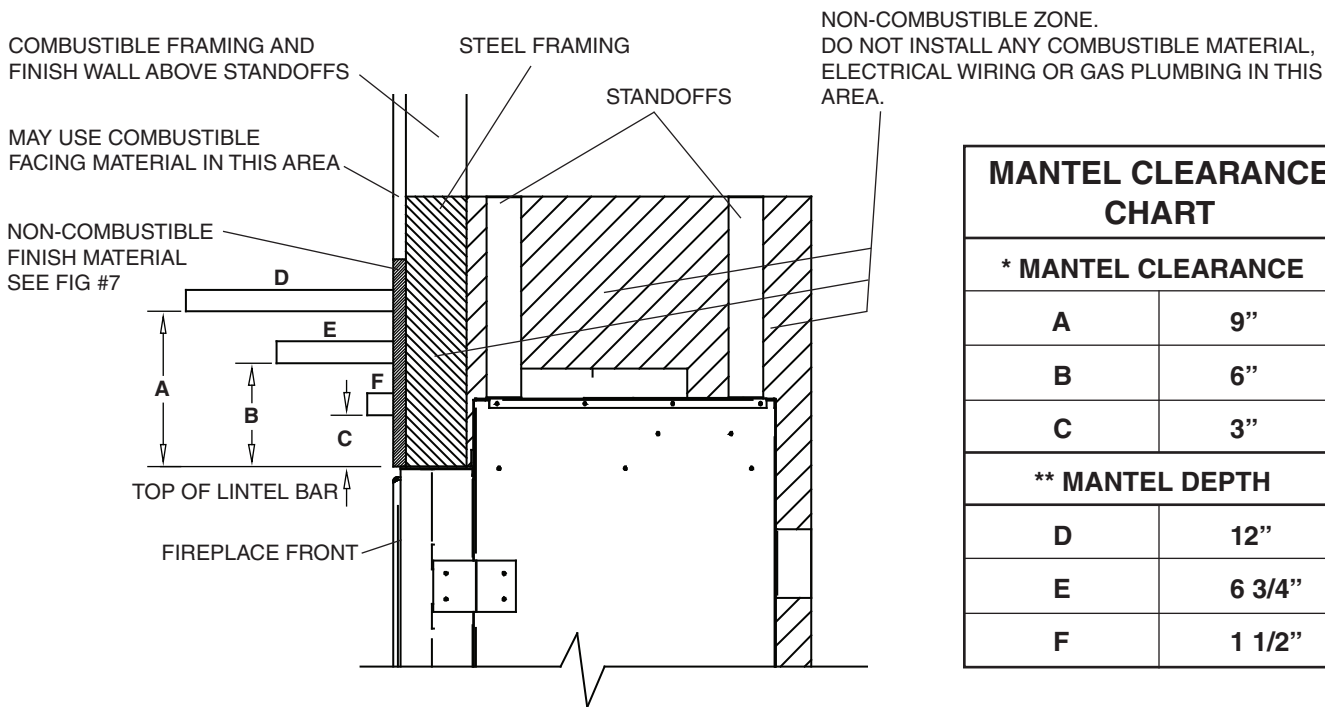
TCWS.38.CE Cad Drawing
Available at
www.townandcountryfireplaces.com

Examples of Common Locations



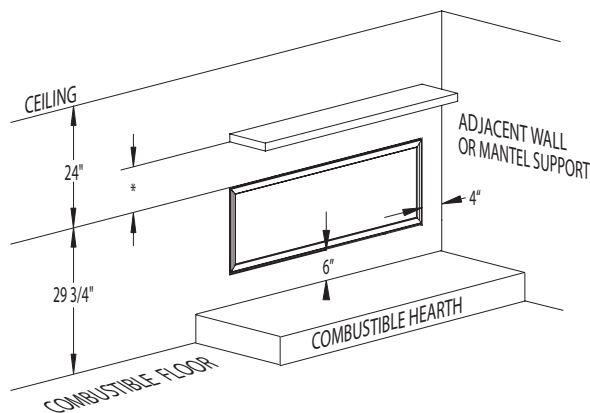
For reference only. Consult Manual before installation

Mantel Clearance Chart



MANTEL CLEARANCE CHART	
* MANTEL CLEARANCE	
A	9"
B	6"
C	3"
** MANTEL DEPTH	
D	12"
E	6 3/4"
F	1 1/2"

Minimum Clearances to Combustibles



UNIT MAY BE RECESSED UP TO 6" WITH NON-COMBUSTIBLE MASONRY TYPE MATERIAL

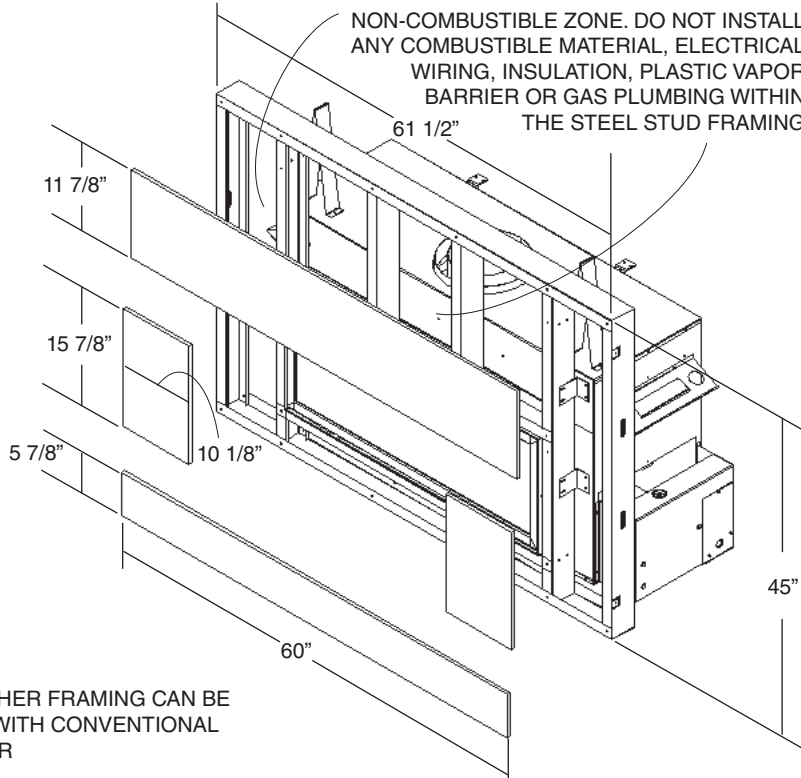
Minimum Clearances:

Side standoffs	0 in.	(0 mm)
Back standoffs	0 in.	(0 mm)
Top standoffs	0 in.	(0 mm)
Bottom of appliance	0 in.	(0 mm)
Adjacent side wall	4 in.	(102 mm)
Ceiling to appliance	24 in.	(610 mm)
*Mantel to appliance	See Figure #2	
**Maximum Mantel extension	See Figure #2	
Mantel support	4 in.	(102 mm)
Vertical vent pipe	1 3/4 in.	(45 mm)

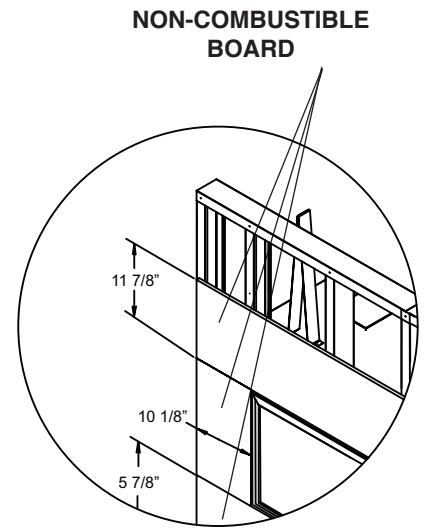
For reference only. Consult Manual before installation

Steel Stud Framing Kit Dimensions

Kit supplied with unit

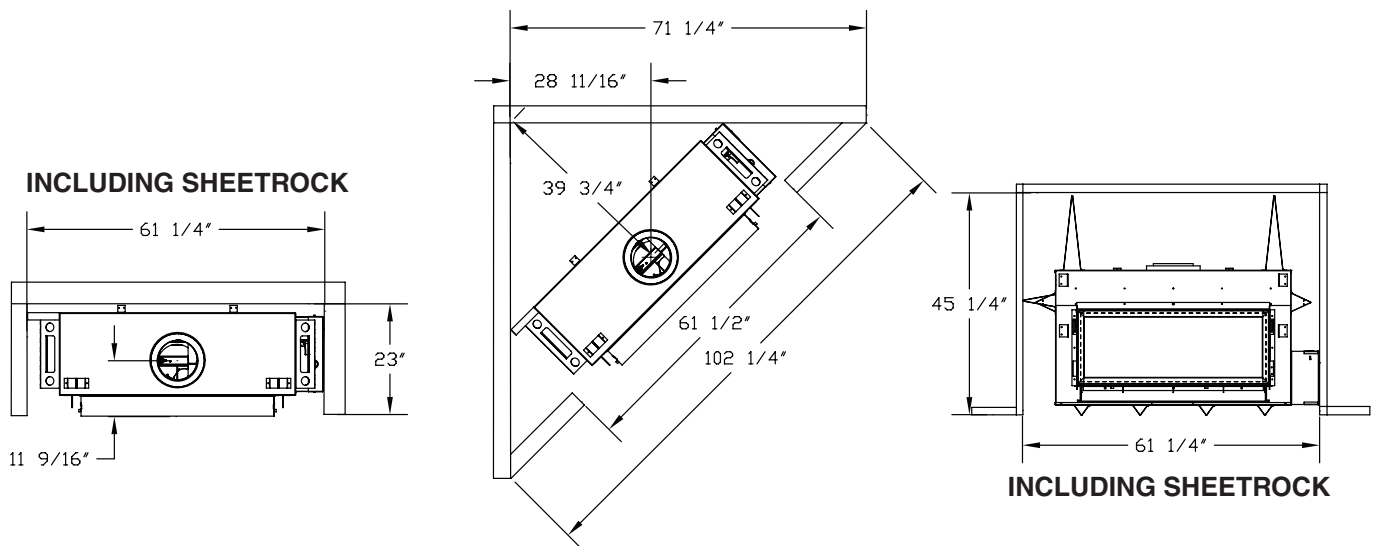


Non-combustible Board Detail



Non-combustible material must extend 12" above, 10" to the sides and 6" below the framing edges.

Minimum Combustible Framing Dimensions



NOTE: Fireplace should be in its final location before framing.

For reference only. Consult Manual before installation

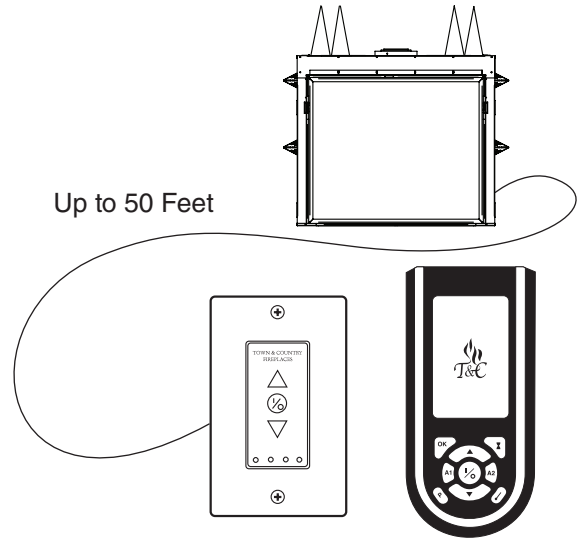
Maestro Control System

Town and Country C Series fireplaces include our award winning Maestro controls.

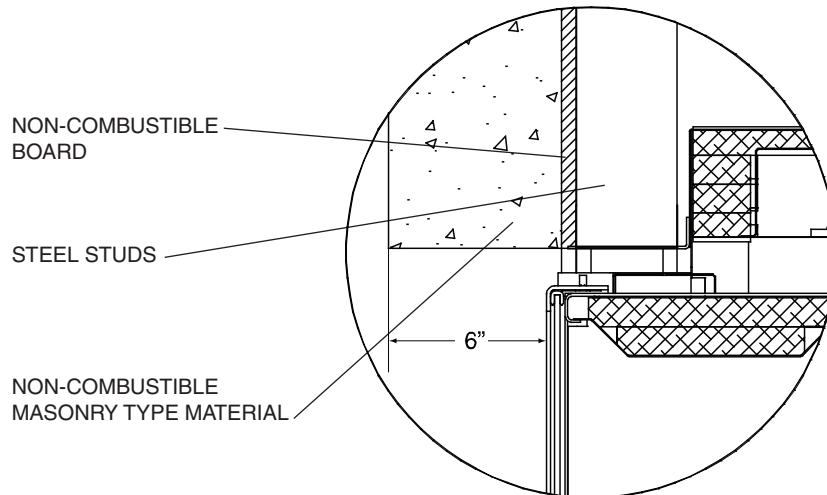
They include an elegant, programmable remote control with a count-down timer, weekday/weekend on/off timer, manual control and thermostat mode (where permitted), and an easy to read LCD display.

They also come with a small, wall-mounted control which permits on/off operation, flame modulation and houses the battery back-up system for operation during power outages.

Maestro controls use an on-demand electronic ignition system, a green alternative to standing pilots, which can cut your annual fuel consumption up to 74%.

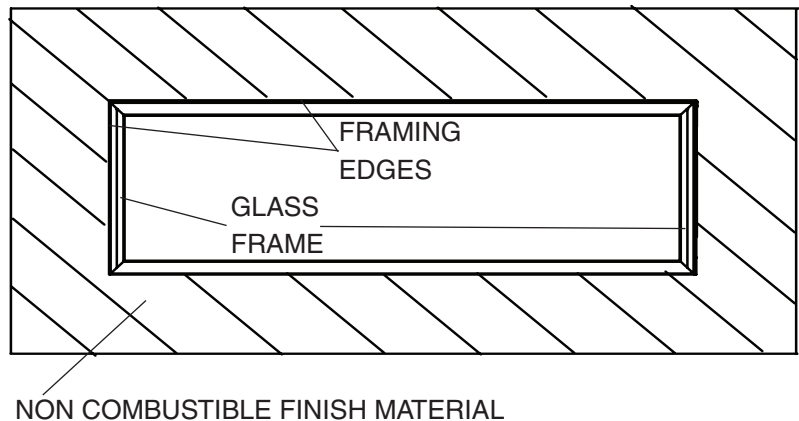


Non-combustible Recessed Installation Detail



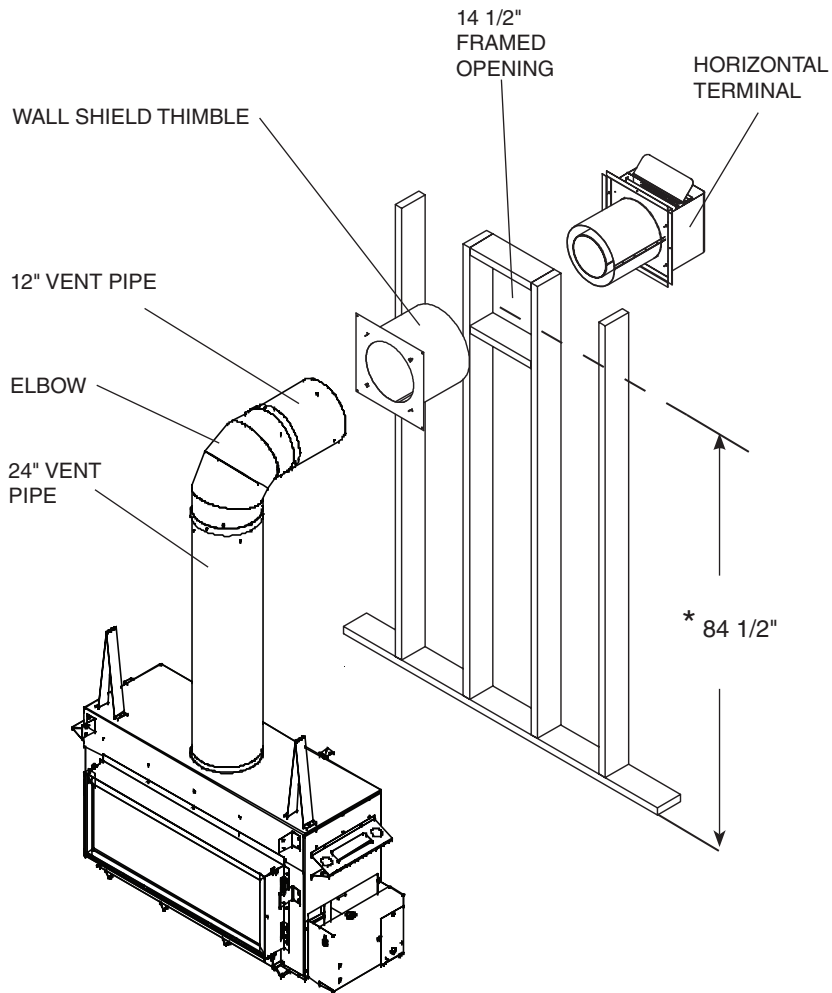
Side Facing Clearances

Caution: This fireplace may be recessed up to a maximum depth of 6". This recess must be constructed from non combustible material. The space between the outside framing edge and the firebox must be completely free of any obstructions or debris and the window, with trim fitted, must be able to move freely. No building material is permitted to protrude past the framing edges attached to the fireplace under ANY circumstance.



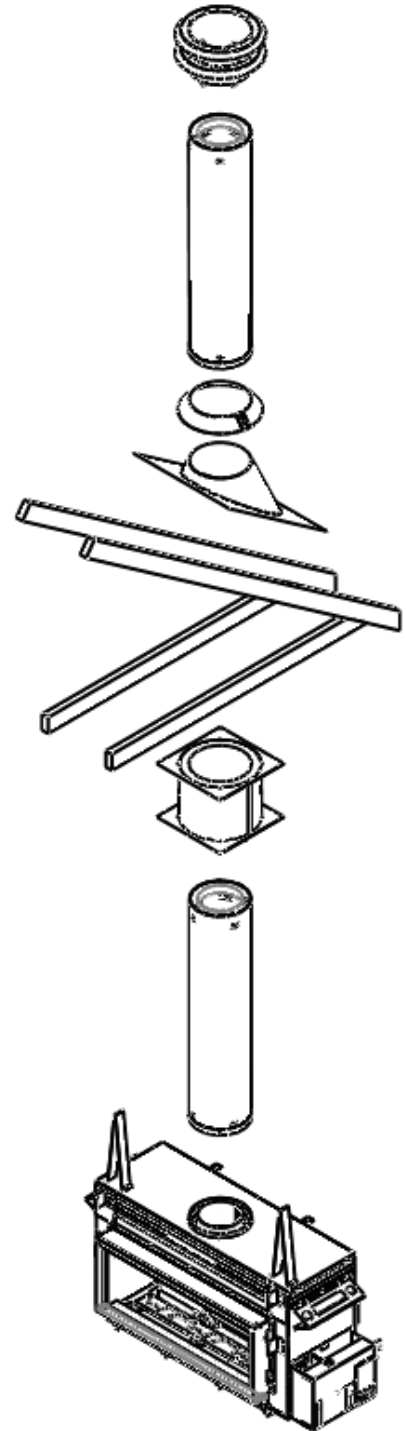
For reference only. Consult Manual before installation

Direct Vent Wall Installation



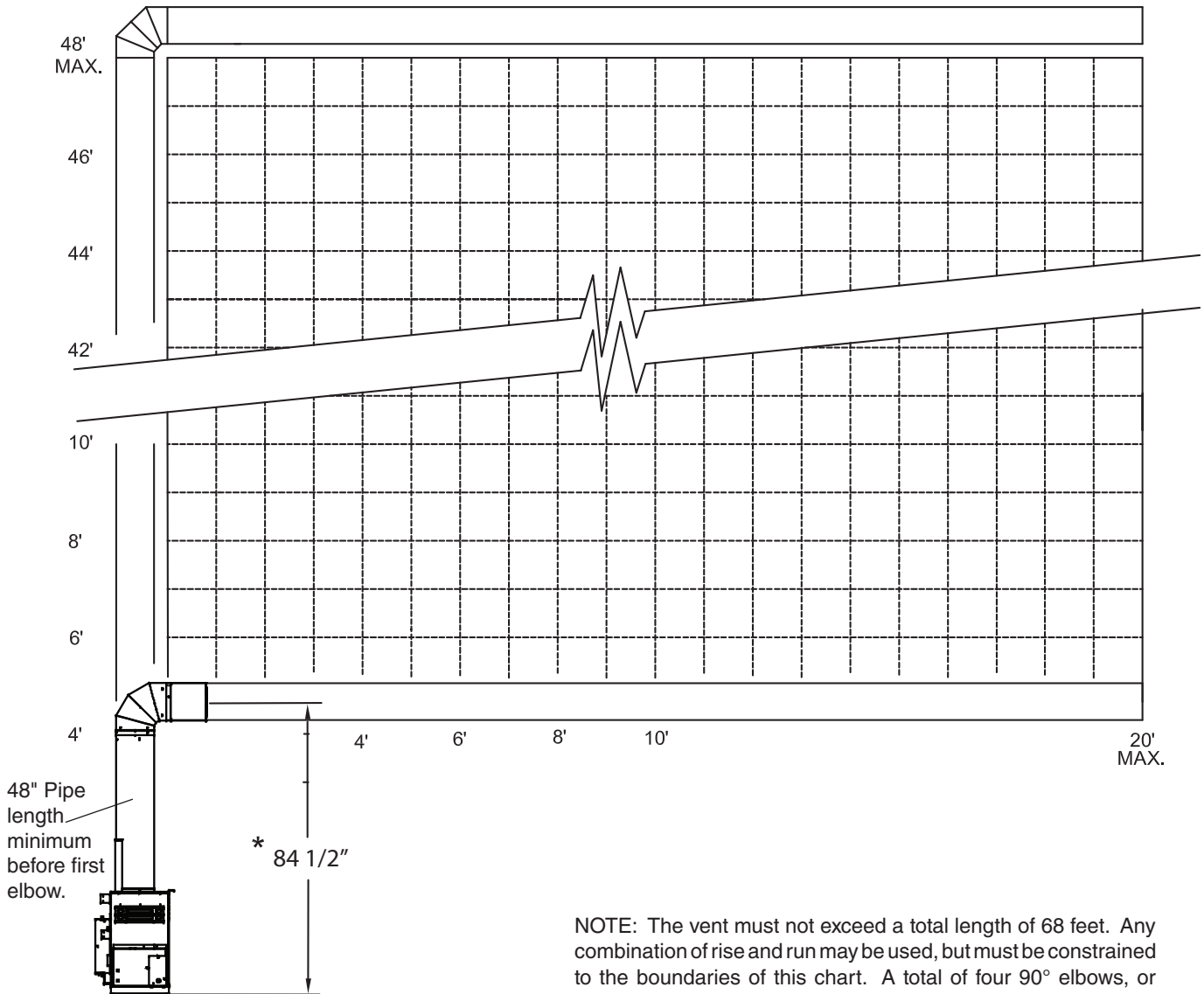
* Minimum height from the floor to center of the 14 1/2" framed opening. The height will need to be increased with longer horizontal pipe.

Direct Vent Roof Installation

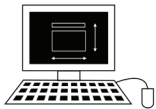


For reference only. Consult Manual before installation

Wall Termination Venting Charts



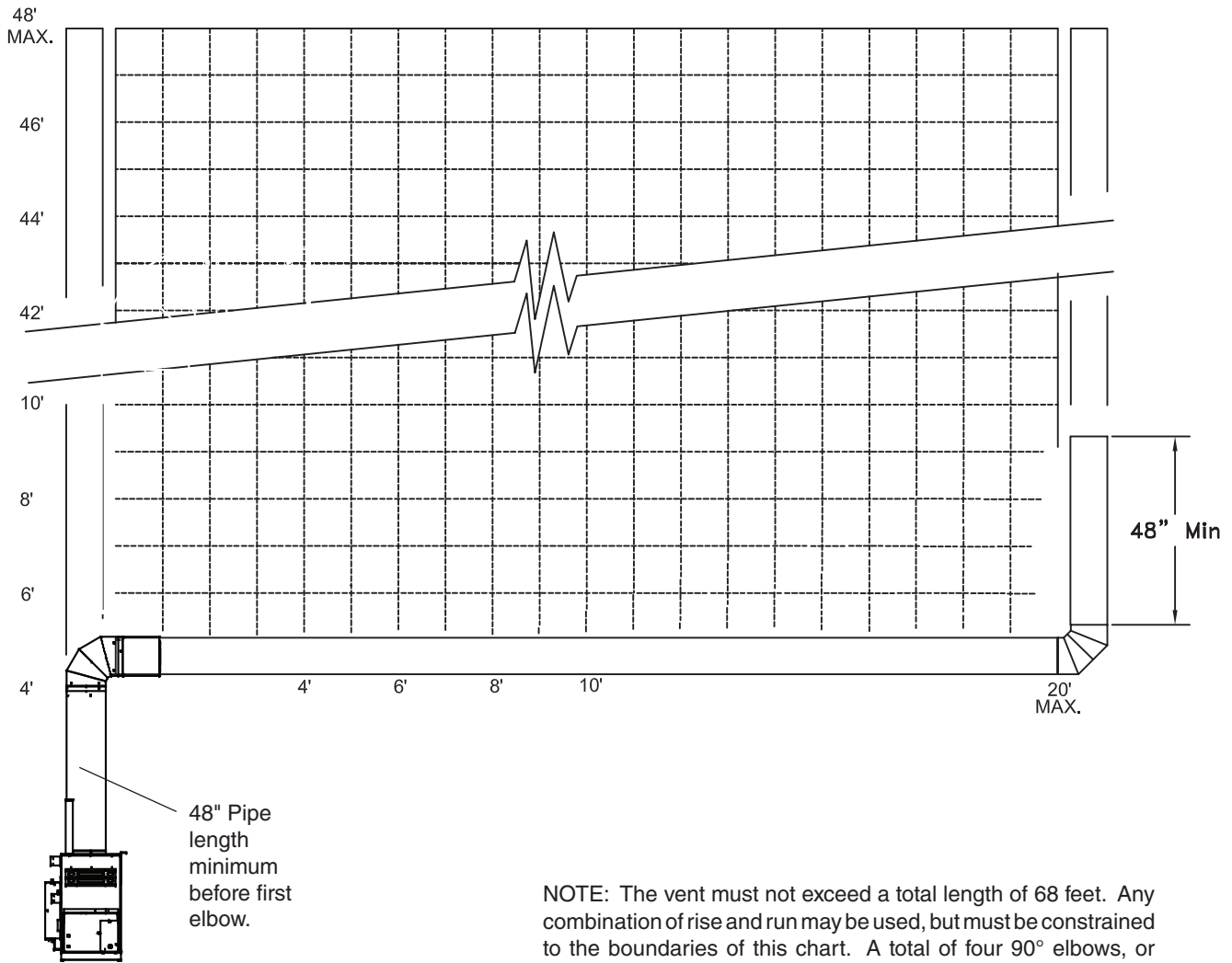
NOTE: The vent must not exceed a total length of 68 feet. Any combination of rise and run may be used, but must be constrained to the boundaries of this chart. A total of four 90° elbows, or combination of other elbows equalling 90°, can be used without reducing horizontal run. For each additional 90° elbow, or an equal combination of elbows, reduce horizontal vent run by 2 feet. Ensure vent pipe is properly supported.



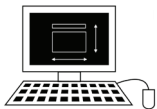
**TCVT Wall Vent
Cad Drawing**
Available at
www.townandcountryfireplaces.com

For reference only. Consult Manual before installation

Roof Termination Venting Charts



NOTE: The vent must not exceed a total length of 68 feet. Any combination of rise and run may be used, but must be constrained to the boundaries of this chart. A total of four 90° elbows, or combination of other elbows equalling 90°, can be used without reducing horizontal run. For each additional 90° elbow, or an equal combination of elbows, reduce horizontal vent run by 2 feet. Ensure vent pipe is properly supported.



TCVT Roof Vent Cad Drawing
Available at
www.townandcountryfireplaces.com

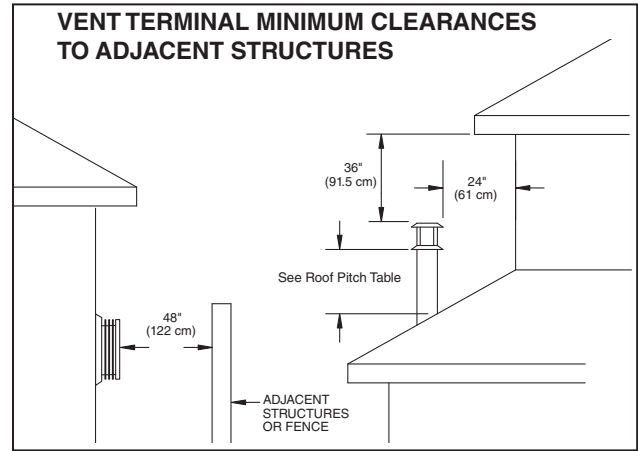
For reference only. Consult Manual before installation

Vent Terminal Clearance

Minimum clearances to the vent terminal must be maintained as shown (See illustration to right & below). Measure clearances to the nearest edge of termination hood. (See pitch table below).

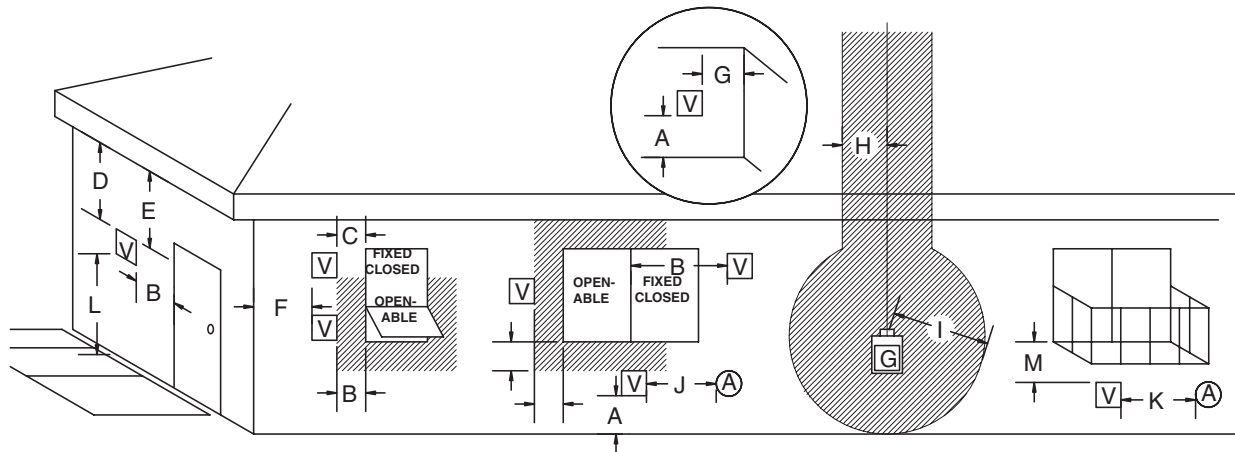
NOTE: Vent terminal must not be recessed

NOTE: LOCAL CODES OR REGULATIONS MAY REQUIRE DIFFERENT CLEARANCES.



Roof Pitch Table	(minimum)	
	ft	m
Flat to 6/12	1.00	0.30
Over 6/12 to 7/12	1.25	0.38
Over 7/12 to 8/12	1.50	0.46
Over 8/12 to 9/12	2.00	0.61
Over 9/12 to 10/12	2.50	0.76
Over 10/12 to 11/12	3.25	0.99
Over 11/12 to 12/12	4.00	1.22

Vent Terminal Minimum Clearances



☐ VENT TERMINAL

Ⓐ AIR SUPPLY INLET

▨ AREA WHERE TERMINAL IS NOT PERMITTED

Ⓜ GAS METER

A=	*12 inches (30 cm) min.	Clearances above grade, veranda, porch, deck, or balcony
B=	*12 inches (30 cm) min.	Clearance to window or door that may be opened
C=	12 inches (30 cm) min.	Clearance to permanently closed window recommended to prevent condensation on window
D=	30 inches (76 cm) min.	Vertical clearance to ventilated soffit located above the terminal within a horizontal distance of 2 feet (60 cm) from the edge of the terminal
E=	30 inches (76 cm) min.	Clearance to unventilated soffit
F=	6 inches (15 cm) min.	Clearance to outside corner
G=	6 inches (15 cm) min.	Clearance to inside corner
H=	3 feet (90 cm) min.	*Not to be installed above a meter/regulator assembly within 3 feet (90 cm) horizontally from the center-line of the regulator
I=	*6 feet (1.8 m) min.	Clearance to service regulator vent outlet
J=	*12 inches (30 cm) min.	Clearance to non-mechanical air supply inlet to building or the combustion air inlet to any other appliance
K=	*6 feet (1.8 m) min.	Clearance to a mechanical air supply inlet
L=	*7 feet (2.1 m) min.	^ Clearance above paved side-walk or a paved driveway located on public property
M=	**30 inches (76 cm) min	Clearance under veranda, porch, deck, or balcony

^ a vent shall not terminate directly above a side-walk or paved driveway which is located between two single family dwellings and serves both dwellings*

** only permitted if veranda, porch, deck, or balcony is fully open on a minimum of 2 sides beneath the floor*

* as specified in CAN/CSA B149 Installation Codes, Note: local Codes or Regulation may require different clearances

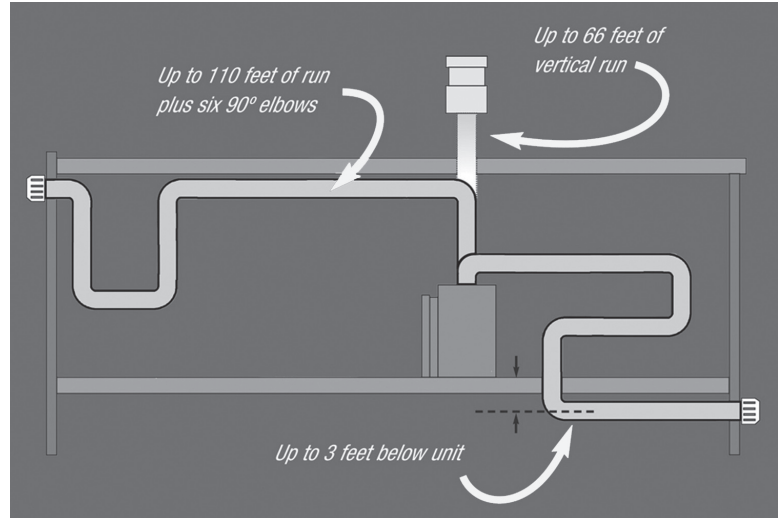
* for U.S.A. Installations follow the current National Fuel Gas Code, NFPA54 /ANSI #Z21.50.b

For reference only. Consult Manual before installation

Optional Power Vent

Reach almost any room or commercial setting. Optional Power Venting allows runs up to 110' from an outside wall or roof surface. Vent horizontally or vertically with up to six 90-degree elbows, including runs up to 3' below the fireplace.

The premium Power Vent fan runs quietly outside, at the exterior terminal.



Power Vent Terminals

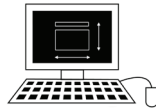
Wall Termination



Roof Termination



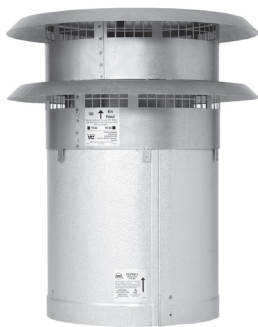
Flush Mount Horizontal Termination



Cad Drawings available at www.townandcountryfireplaces.com

Direct Vent Terminals

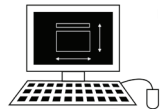
Standard Venting Roof Termination



Standard Venting Wall Termination



Stainless Steel Standard Venting Termination for Condo Installation



Cad Drawings available at www.townandcountryfireplaces.com



TOWN & COUNTRY
LUXURY FIREPLACES™

For personal service pertaining to specific projects, contact:

Town & Country Architect Resource Planner

architects@pacificenergy.net

Web: www.townandcountryfireplaces.com

Phone: (250) 748-1184

Toll Free: 1-877-715-2664

2975 Allenby Road, Duncan, BC Canada V9L 6V8

Printed in Canada