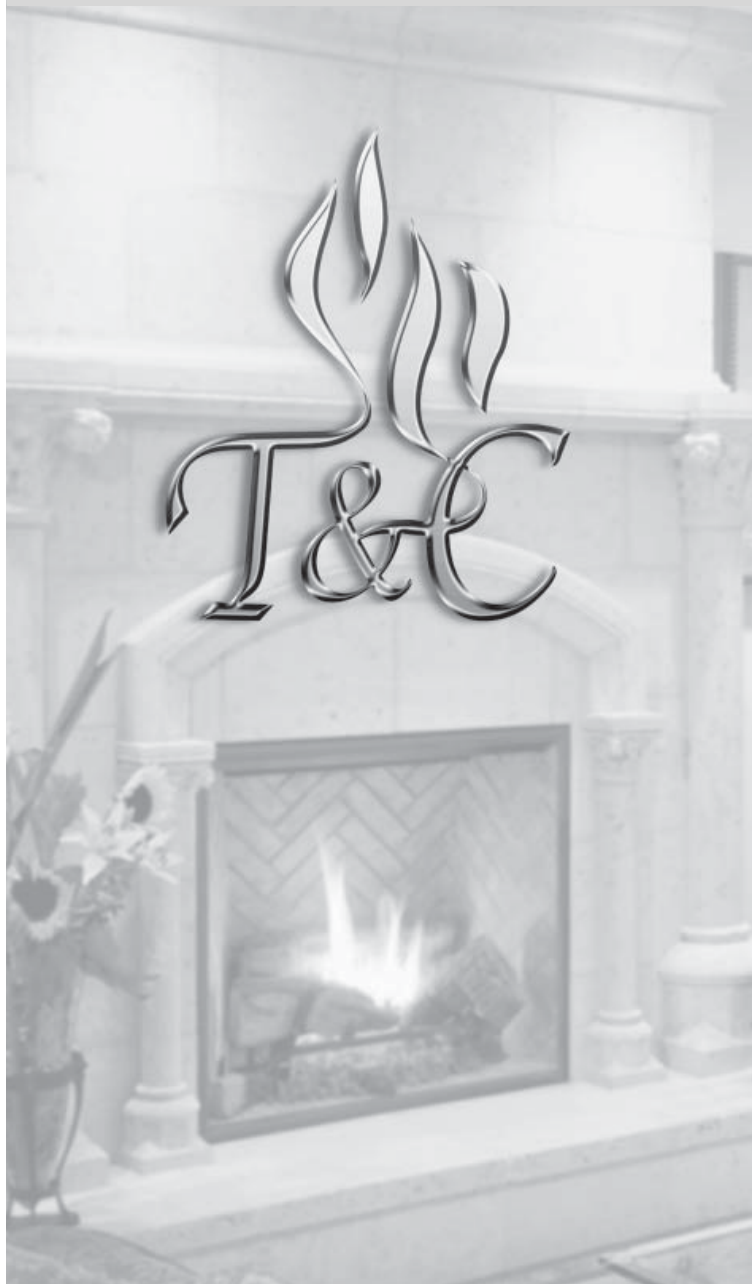


**IMPORTANT:
THESE INSTRUCTIONS ARE TO REMAIN
WITH THE APPLIANCE INSTRUCTIONS**

These instructions are supplementary to the Installation and Operating Instructions supplied with the fireplace and should be kept together. Refer to the Installation and Operating Instructions for proper gas supply, safety requirements and operating instructions



**TOWN & COUNTRY
FIREPLACES™**

HIGH CAPACITY POWER VENT KIT

- **Horizontal Termination Applications Only**

TCVT.PVAX21 INSTALLATION AND OPERATING INSTRUCTIONS

**NOTE:
THIS POWER VENT KIT
USES ONLY T&C 8X11
FLUE PIPE**



High Capacity Power Vent Installation

This Kit can only be used in conjunction with the TC54 Town and Country fireplaces.

Locate the fireplace as per the main instructions supplied.

Make the following modifications to add the components used with the Power Vent Kits.

Any of the silicon seals on the outer box that are broken during servicing must be re-sealed using RTV silicon during re-assembly to ensure a weather-proof seal.

This installation must conform with local codes or, in the absence of local codes, with the Natural Fuel Gas Code, ANSI Z223.1/NFPA 54, or the Natural Gas and Propane Installation Code, CSA B149.1.

Contents of High Capacity Power Vent

MINIMUM CLEARANCES TO COMBUSTIBLE

Vertical vent pipe:
1.75 in. (45mm)

Horizontal vent pipe:

Top 1.75 in. (45mm)
Sides 1.75 in. (45mm)
Bottom 1.75 in. (45mm)

All other clearances are as per the fireplace installation instructions.

ITEM	DESCRIPTION	QTY
1	Power Vent Terminal	1
2	Venting Adaptor	1
3	Pressure Switch Wiring	2
4	Pressure Switch Brackets	1
5	Pressure Switch	2
6	Tubing ,6 inch section	2
7	Hose Clamp	6
8	Module Switch Wires	1
9	Pressure Switch Tubing Tee	1
10	Tubing ,6 ft section	1

Fig. #1

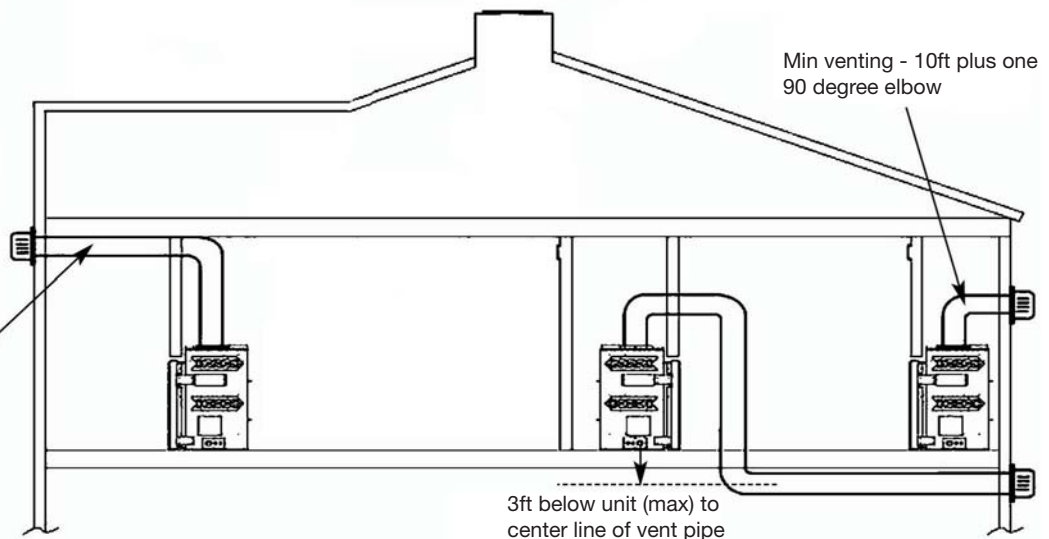
Maximum vent length is 66 ft plus six 90 degree elbow or combination of other elbows equaling 90 degrees.

Minimum vent length is 10 ft plus one 90 degree elbow.

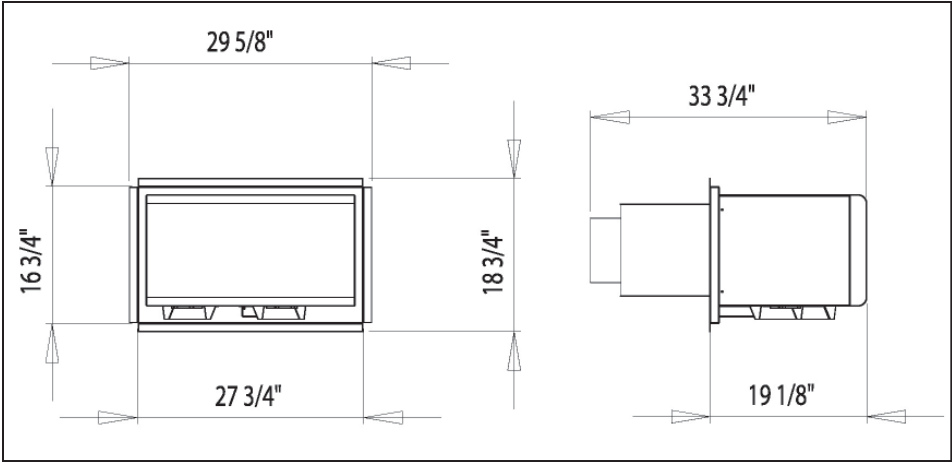
The vent can be installed with any combination of rise and run between the above figures including 3ft below the unit. Ensure that the vent pipe is properly supported.

Maximum venting - 66ft plus six 90 degree elbows

High Capacity Power Vent

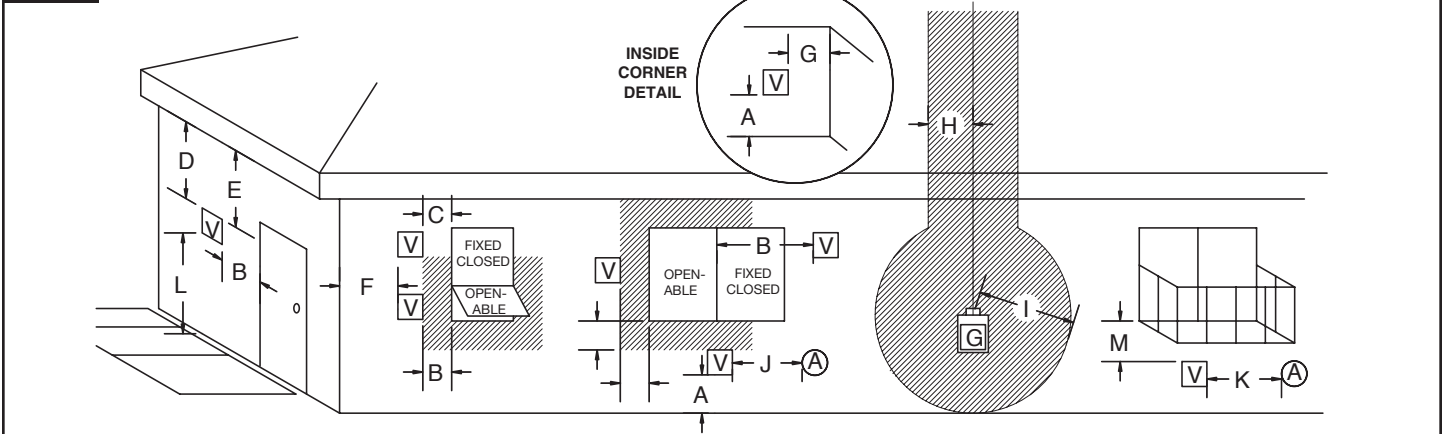


High Capacity Power Vent Terminal Dimensions



Vent Terminal Minimum Clearances

Fig. #2



- V VENT TERMINAL
- A AIR SUPPLY INLET
- AREA WHERE TERMINAL IS NOT PERMITTED
- G GAS METER

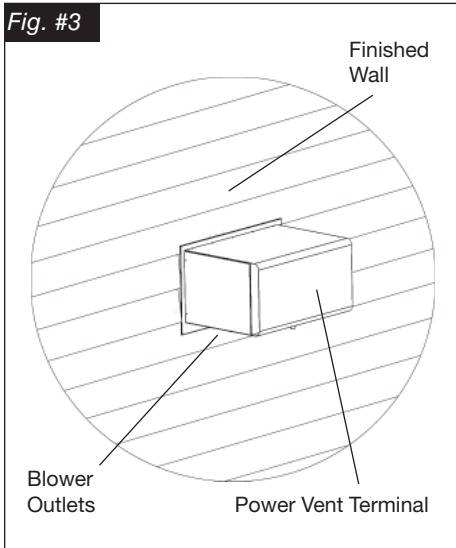
- A= clearances above grade, veranda, porch, deck, or balcony [* 36 inches (91.5 cm) minimum]
- B= clearance to window or door that may be opened [* 12 inches (30 cm) minimum]
- C= clearance to permanently closed window [minimum 12 inches (30 cm) recommended to prevent condensation on window]
- D= vertical clearance to ventilated soffit located above the terminal within a horizontal distance of 12" (30 cm) minimum.
- E= clearance to unventilated soffit [12 inches (30 cm) minimum]
- F= clearance to outside corner [12 inches (30 cm) minimum]
- G= clearance to inside corner [36 inches (91.5 cm) minimum]
- H= * not to be installed above a meter/regulator assembly within 3 feet (90 cm) horizontally from the center-line of the regulator
- I= clearance to service regulator vent outlet [* 3 feet (90 cm) minimum]
- J= clearance to nonmechanical air supply inlet to building or the combustion air inlet to any other appliance [* 12 inches (30 cm) minimum]
- K= clearance to a mechanical air supply inlet [* 6 feet (1.8 m) minimum]
- L= ^ clearance above paved side-walk or a paved driveway located on public property [* 7 feet (2.1 m) minimum]
- M= clearance under veranda, porch, deck, or balcony [12 inches (30 cm) minimum**]

^ a vent shall not terminate directly above a side-walk or paved driveway which is located between two single family dwellings and serves both dwellings*
 ** only permitted if veranda, porch, deck, or balcony is fully open on a minimum of 2 sides beneath the floor*
 * as specified in CGA B149 Installation Codes, Note: local Codes or Regulation may require different clearances

Horizontal (Side Wall) Venting

This kit uses Town and Country direct vent pipe with a 8" inner pipe and an 11" outer pipe. For part numbers see the table of venting components on page 10 & 11 of this manual.

Fig. #3



1. Locate the power vent termination following the clearance to combustible table, venting configuration diagram (Fig. #1) and terminal location diagram (Fig. #2).
2. Cut and frame a 14" x 14" opening. The centre of the square hole should line up with the centre line of the horizontal pipe.
3. Install the Town and Country firestop in the opening to retain any insulation in the wall and maintain proper clearances. If the wall being penetrated is constructed of non-combustible material only (i.e. Masonry block or concrete) the wall thimble is not required and a hole with zero clearance is acceptable. (11" hole)
4. Attach the terminal to the outside wall. Ensure that the terminal is the right way up and that only the outer flanges that are used to secure the terminal to the building are covered by the exterior wall or siding. (Fig.#3) **Note: No other part of the terminal can be recessed into the exterior wall or siding.**
5. Attach the vent adaptor directly to the appliance with three screws and seal outer pipe with aluminium tape provided. **Note: The inner pipe does not need to be sealed.**

TO PAINT TERMINAL

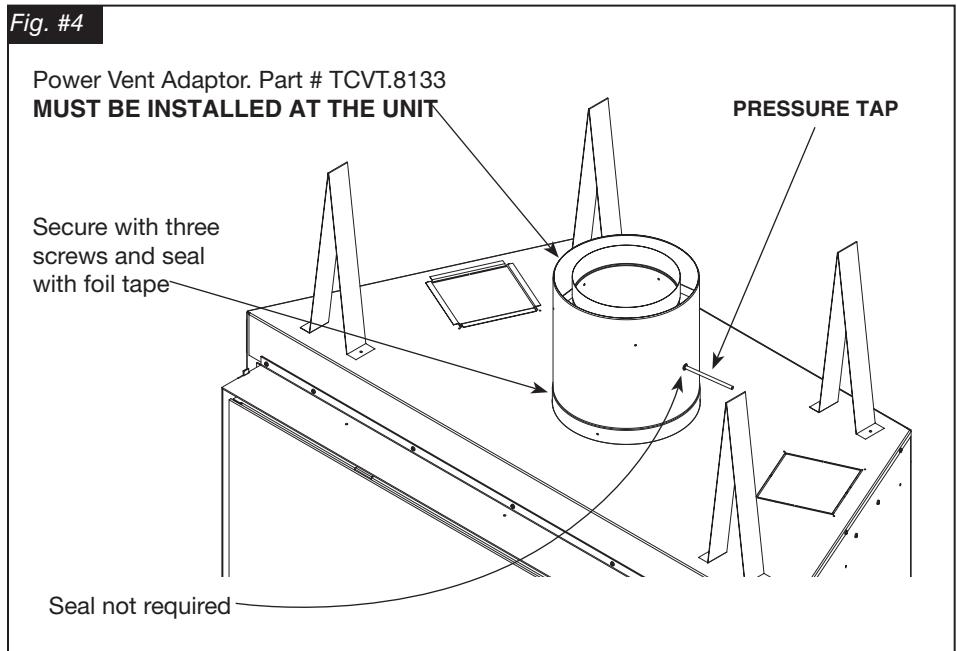
THIS TERMINAL MUST BE PAINTED AT THE TIME OF INSTALLATION.

THE PAINT USED SHOULD BE CERTIFIED TO WITHSTAND TEMPERATURE OF AT LEAST 225 F. (157 C).

WHEN PAINTING IT IS SUGGESTED THAT THE INLET AND OUTLET VENTS BE BLOCKED TO PREVENT PAINT BEING ACCIDENTALLY SPRAYED ON THE INTERNAL COMPONENTS OF THIS TERMINAL.

PLEASE ENSURE THAT INLET AND OUTLETS OF THIS TERMINATION ARE CLEAR PRIOR TO OPERATING THE FIREPLACE. FAILURE TO DO SO MAY CAUSE A FIRE OR EXPLOSION THAT MAY RESULT IN PROPERTY DAMAGE, PERSONAL INJURY OR LOSS OF LIFE.

Fig. #4



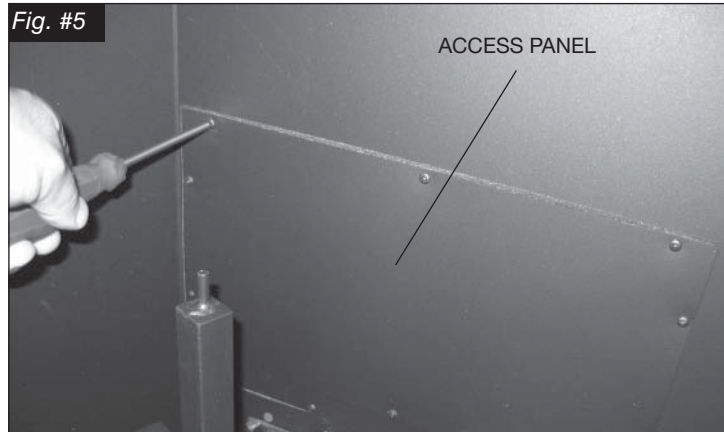
6. Connect the high temperature silicone tube to the vacuum pressure tap on the adaptor, secure with the hose clamp provided and route the tube through any hole back to control box. (Fig. #4) Tube may touch unit and be trimmed if required. **Note: Ensure that there are no blockages in this tube, as this will cause the control to malfunction.**
7. Run the required pipe from the adaptor to the terminal assembly.

Control System Connections for Built-in Relay

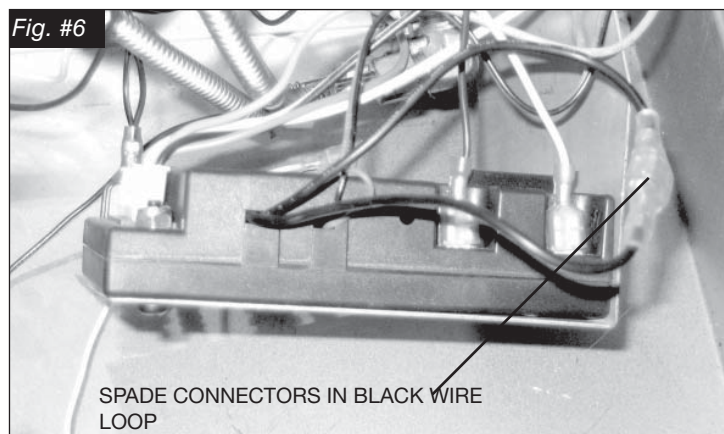
(TC54 Serial # 5082 ON)

The gas control system is located on the right hand side of the firebox behind an access panel and the decorative brick panel.

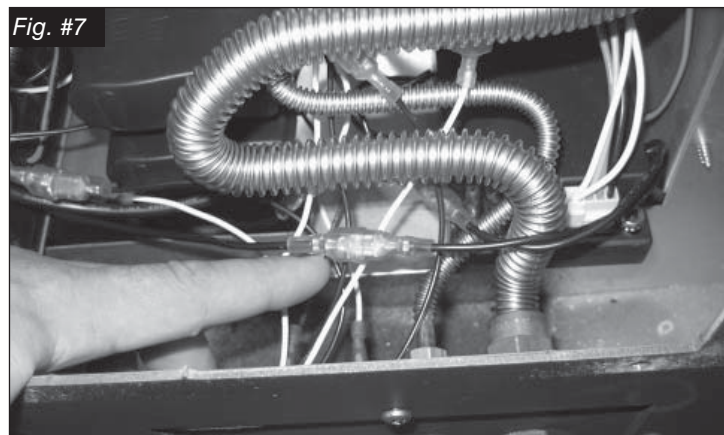
1. Remove burner grate, logs and brick panels if already installed.
2. Remove access panel from right hand side of the firebox. (Fig. #5)



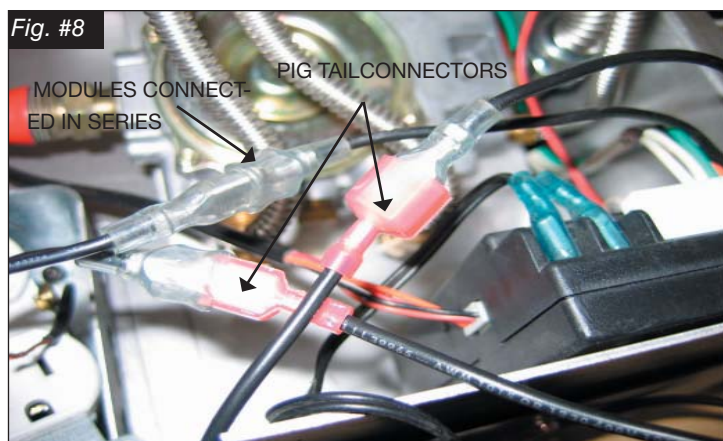
3. Locate and disconnect the spade connectors in the black wire loop on the right side of the module. (Fig#6)



4. Connect the two modules in series by connecting a male connector from black wire loop from the one module to the female connector from the black wire loop on the other



5. Connect the remaining male and female connectors from the black loops on each module to the pig tail connections supplied. (Fig.#8)

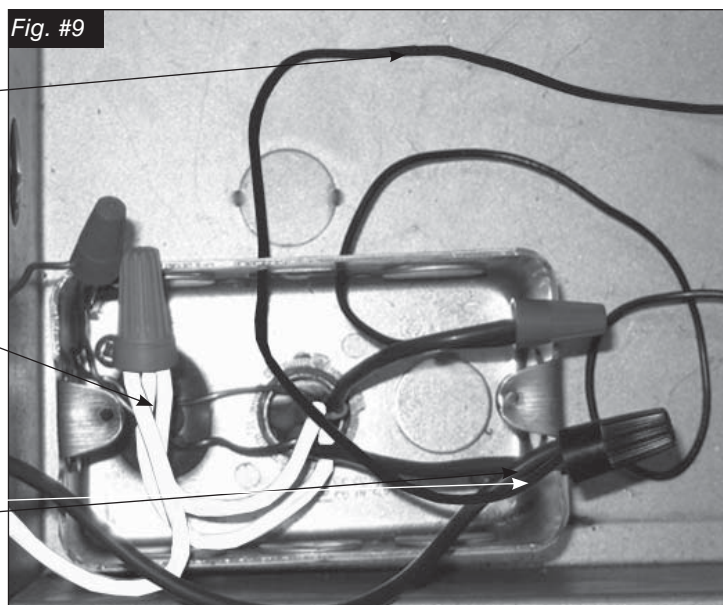


6. Connect the 120V hot supply wire to one of the pig tails from the module.(Fig. #9)

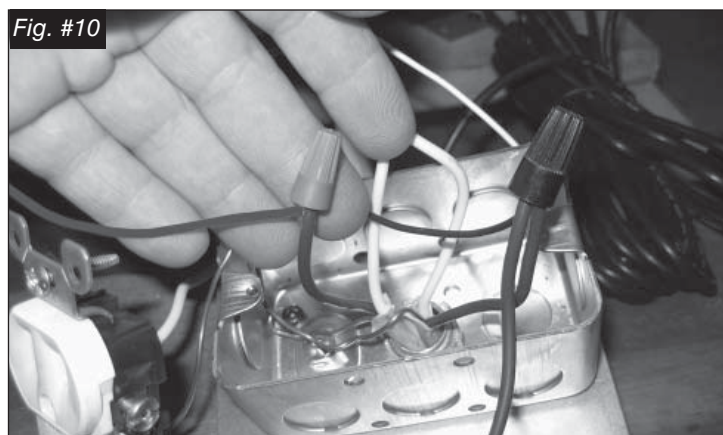
PIG TAIL TO MODULE

WHITE (NEUTRAL) WIRE FROM 120V POWER SUPPLY CONNECTED TO REMAINING WIRE FROM BLOWER.

120V HOT SUPPLY WIRE

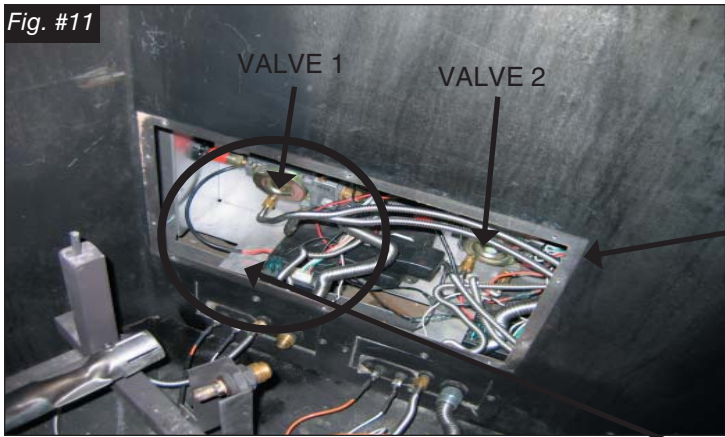


7. Connect the white (neutral) wire from the 120V power supply to the remaining wire from the blowers. (Fig #9)



8. Connect one of the black wires from the blowers to the other pig tail from the module. (Fig. #10)

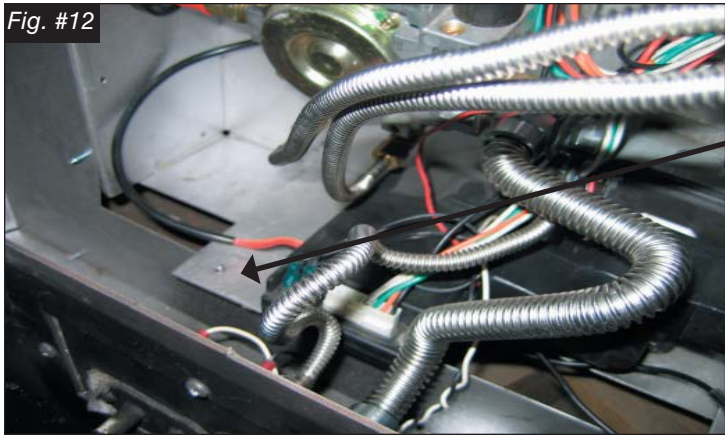
Fig. #11



9. Locate Mounting position for Pressure Switch.
(Fig #11 & #12)

OPENED ACCESS
PANEL

Fig. #12



MOUNTING POSITION FOR
PRESSURE SWITCH

Fig. #13



10. Connect the Orange wires from the pressure switch to the orange wires on both modules. Valve 1 to left Module and Valve 2 to the right

- Secure the pressure switch in the control box using the bracket provided with this kit. (Fig. 14)

NORMALLY OPEN (NO)

Fig. #14

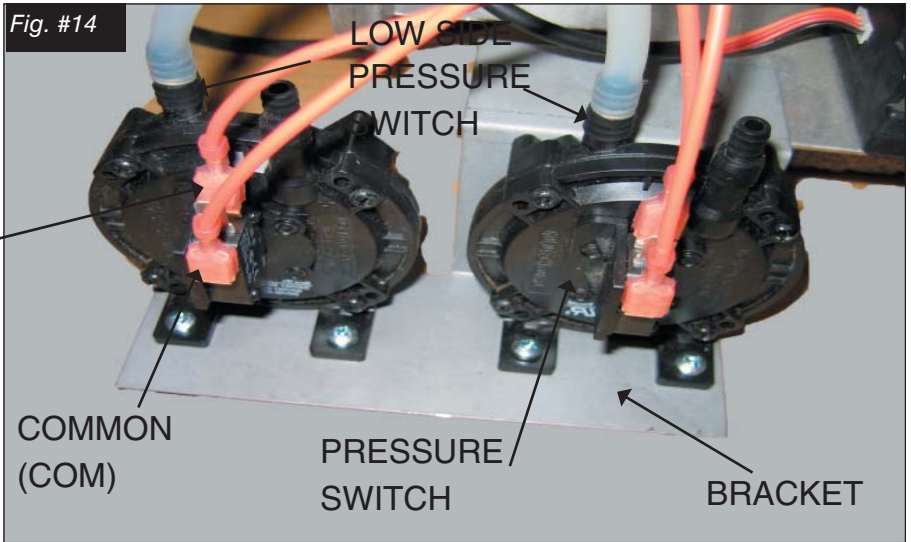


Fig. #15

NOTE: IF THERE IS NO MOUNTING HOLE IN CONTROL BOX, DRILL USING 1/8" DRILL BIT

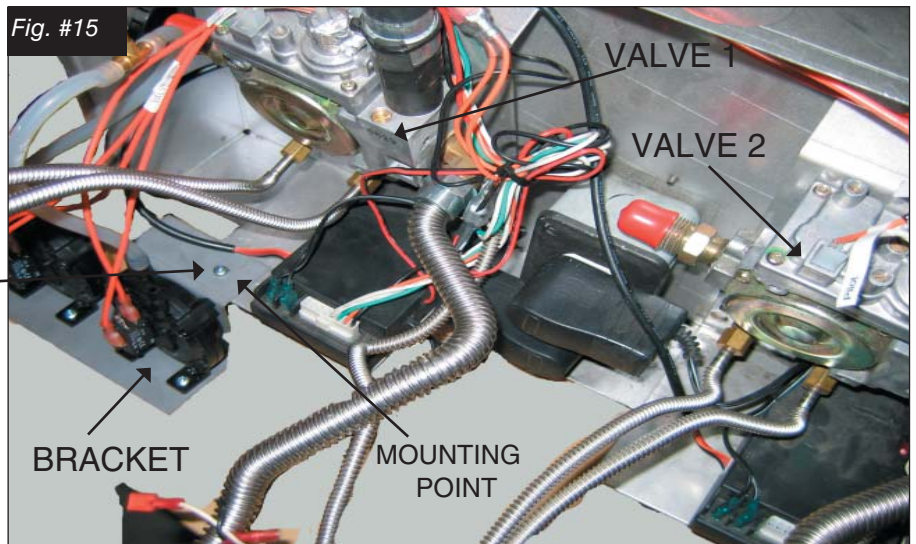
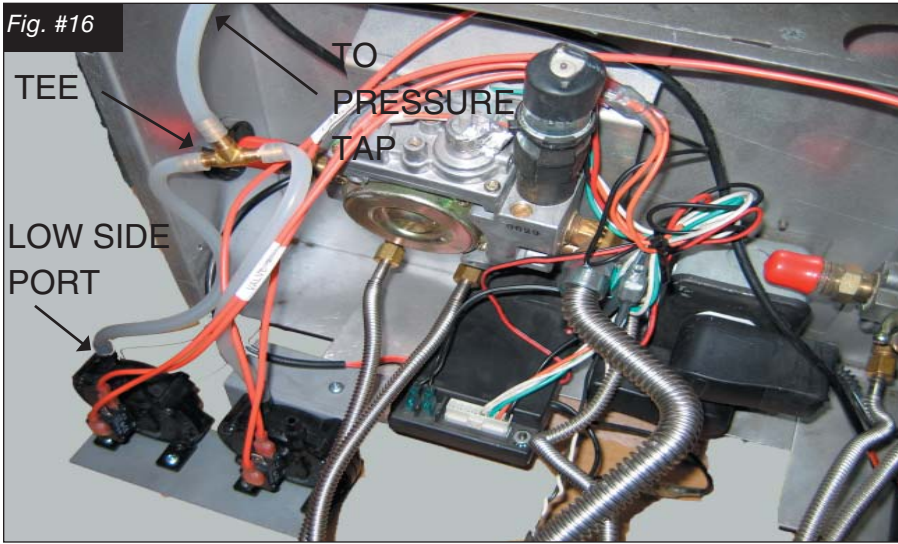
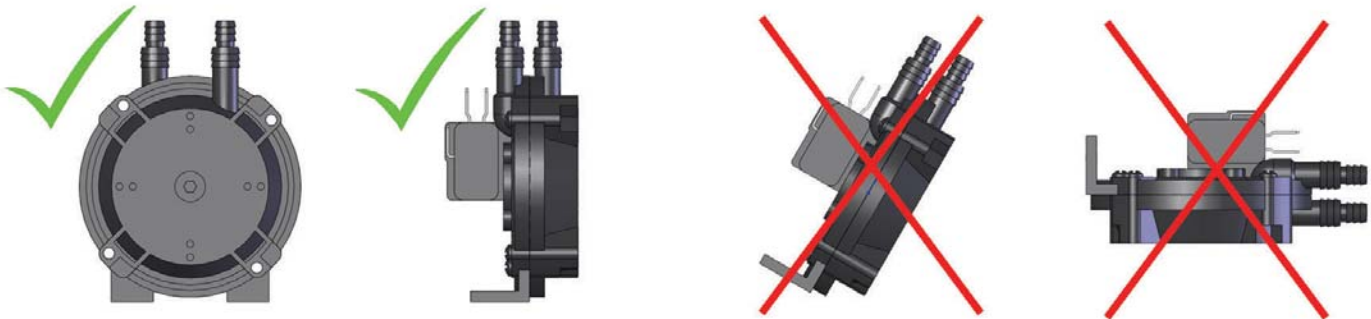


Fig. #16



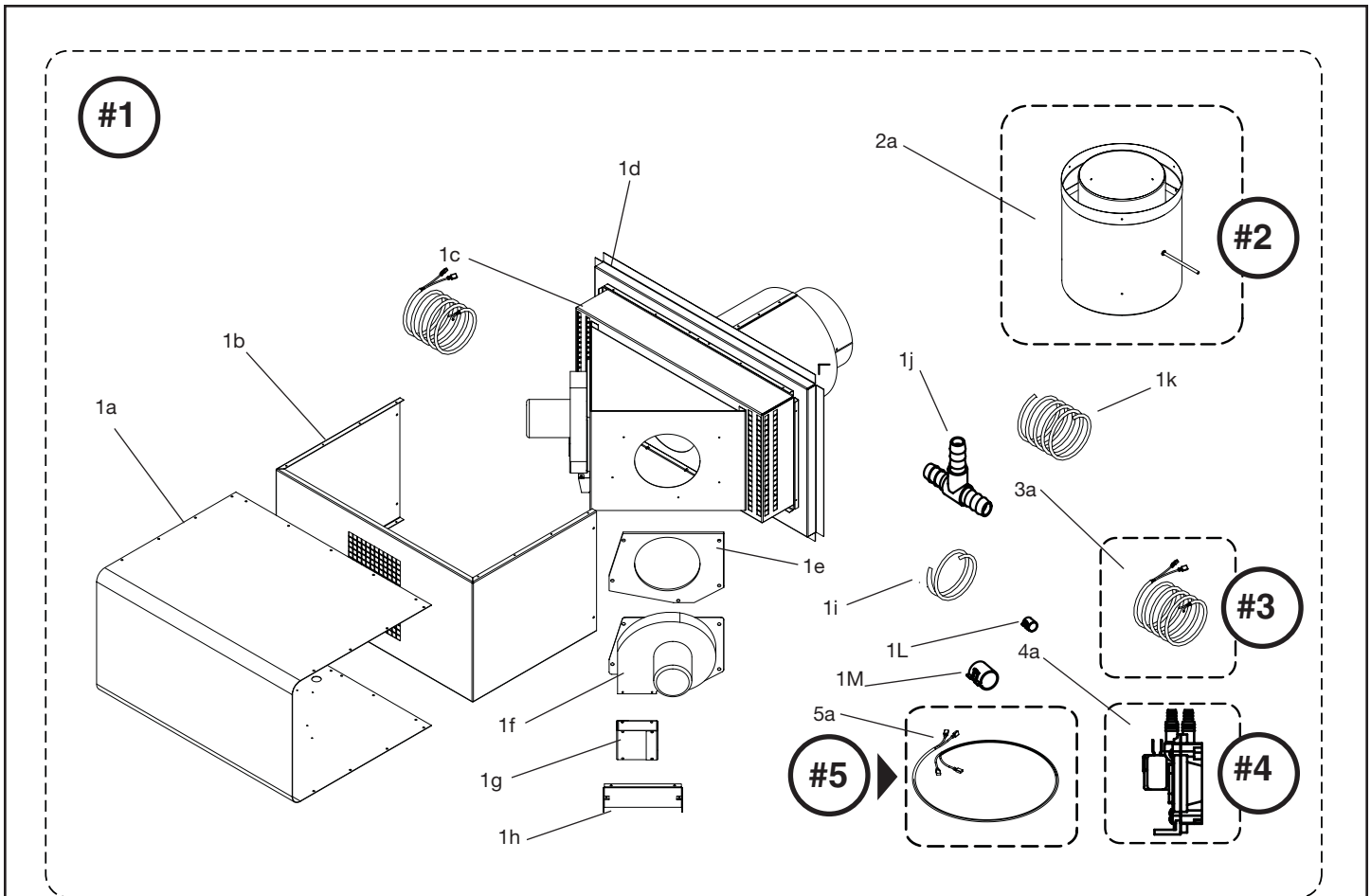
12. Attach the silicone tube from the pressure tap to the Tee connected to the low side of the pressure switches and secure using the hose clamps provided. (Fig. #16)
13. Position all wiring to ensure that there is no contact with the firebox side.
14. Continue with installation and reassemble all of the parts previously removed.

PRESSURE SWITCH MUST BE MOUNTED VERTICLE



Replacement Parts TCVT.PVAX21

ITEM	DESCRIPTION	PART NO.
#1.....	HIGH CAPACITY POWER VENT KIT	TCVT.PVAX21
#2.....	VENTING ADAPTER	TCVT.8133
#3.....	MODULE SWITCH WIRES	TCVT.507156C
#4.....	PRESSURE SWITCH	5027.15
#5.....	PRESSURE SWITCH WIRING (2 Required)	TCVT.50271C2



KIT CONTENTS:

#1.....HIGH CAPACITY POWER VENT KIT

- 1a TOP COVER (1)
- 1b SIDE COVER (1)
- 1c EXHAUST CHAMBER WELD (1)
- 1d INLET AIR CHAMBER WELD (1)
- 1e 1/4" LDF PAPER (HI TEMP GASKET) (2)
- 1f BLOWER POWER VENT (2)
- 1g OUTLET AIR ASSEMBLY (2)
- 1h EXHAUST SHIELD (2)
- 1i TUBE, 5/16" OD, 1/16" THICK (1)
- 1j TEE OD 5/16"

- 1K TUBE, 5/16"OD, 6FT LENGTH
- (1) 1L HOSE CLAMP (1)

#2.....VENTING ADAPTER (1)

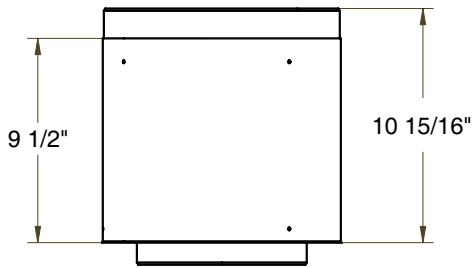
#3.....BLOWER WIRING (2)

#4.....PRESSURE SWITCH (2)

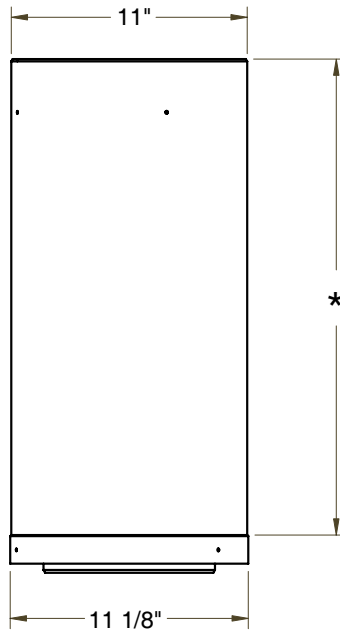
#5.....PRESSURE SWITCH WIRING (2)

* Not shown. See TC54 Installation Manual

Venting Components

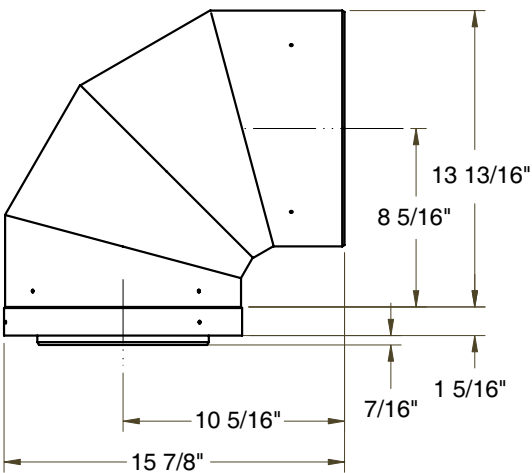


TCVT.811X12ADJ

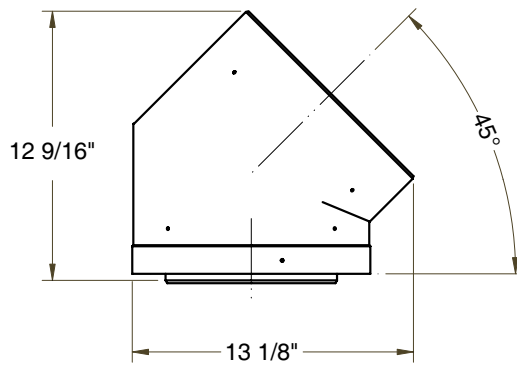


TCVT.811X__

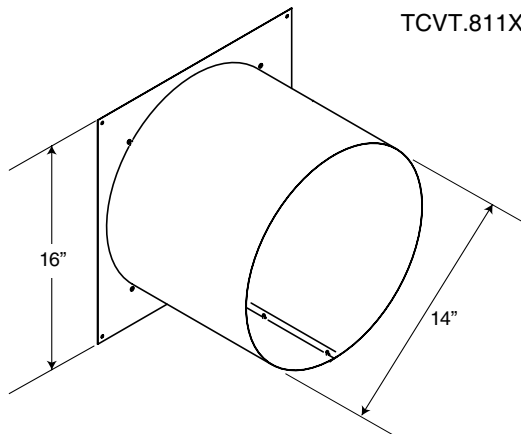
12" Pipe	10 1/4"
18" Pipe	16 1/4"
24" Pipe	22 1/4"
48" Pipe	46 1/4"



TCVT.811XLB90

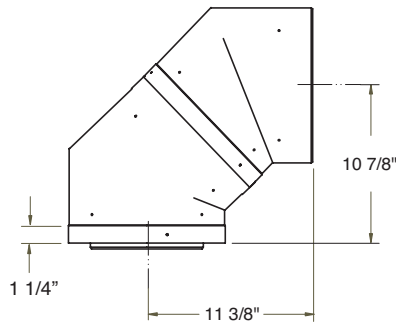


TCVT.811XLB45



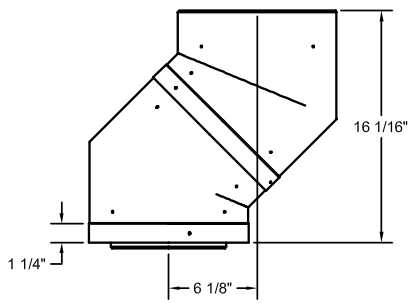
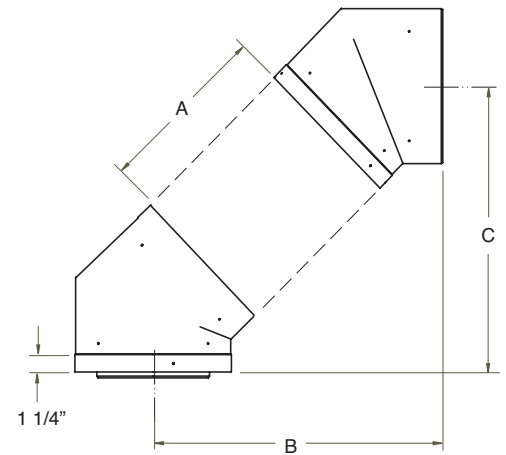
WALL SHIELD/CEILING FIRESTOP THIMBLE TCVT.THIMA

Vent Offset Chart



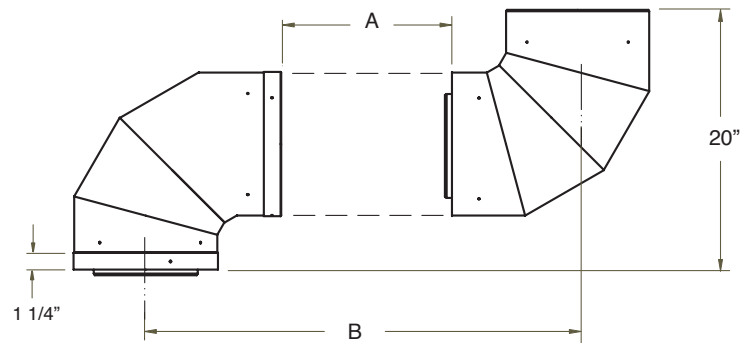
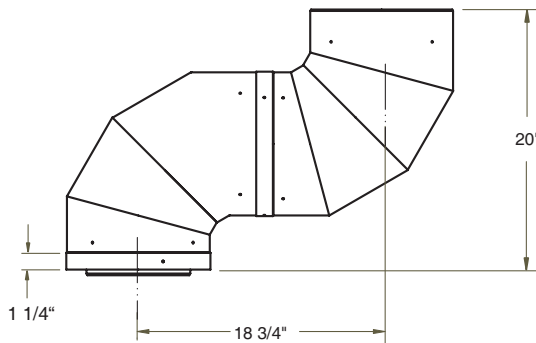
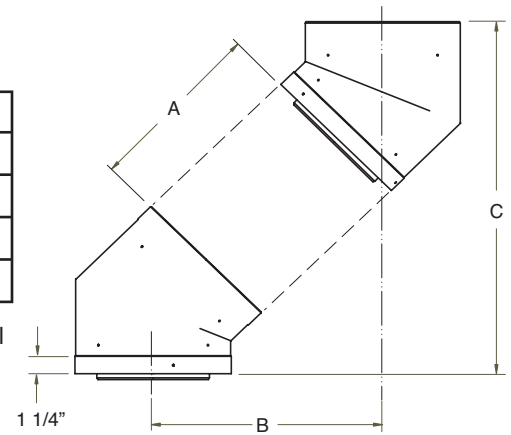
A	B	C
12" Pipe	18 5/8"	18"
18" Pipe	22 7/8"	22 3/8"
24" Pipe	27 1/8"	26 1/2"
48" Pipe	44 1/16"	43 1/2"

Adding an adjustable section to pipe will increase offset by 2 1/8" to 6 3/4"



A	B	C
12" Pipe	13 7/16"	23 1/4"
18" Pipe	17 9/16"	27 5/8"
24" Pipe	21 7/8"	31 3/4"
48" Pipe	38 3/4"	48 7/8"

Adding an adjustable section to pipe will increase offset by 2 1/8" to 6 3/4"



A	B
12" Pipe	29"
18" Pipe	35"
24" Pipe	41"
48" Pipe	65"

Adding an adjustable section to pipe will increase offset by 3" to 9 1/2"



TOWN & COUNTRY
FIREPLACES™

TECHNICAL SUPPORT: 1-877-715-2664
www.townandcountryfireplaces.net
2975 Allenby Rd., Duncan, BC V9L 6V8