

**IMPORTANT:
THESE INSTRUCTIONS ARE TO REMAIN
WITH THE APPLIANCE INSTRUCTIONS**

These instructions are supplementary to the Installation and Operating Instructions supplied with the fireplace and should be kept together. Refer to the Installation and Operating Instructions for proper gas supply, safety requirements and operating instructions.



**TOWN & COUNTRY
FIREPLACES™**

TC42 COUNTRY HOME BURNER KIT INSTRUCTIONS



PART#
TC42.NG02
FOR TC42



Contents of Package



Burner/Grate Installation

Fig. #1



1. Attach the burner assembly to the bottom of the firebox with two screws (Fig. #1).

Fig. #2



2. Attach pilot bracket to burner assembly (Fig. #2).

3. Connect flex gas line to the manifold assembly and ensure the connection is gas tight (Fig #3).



Fig. #3

4. Position the the slots of the grate securing brackets over the holes in the floor shield and secure with two screws (Fig. #4).



Fig. #4

5. Attach air deflector to rear of grate with two screws (Fig. #5).

NB:

Two air deflectors are supplied with this kit; one painted, one porcelain black. Only use the porcelain black deflector if using optional porcelain black liner panels.



Fig. #5

Ember Material

A large bag of ember material is shipped with the fireplace and needs to be installed to ensure optimum performance and flame appearance.

1. Pull apart the material into ember size pieces (approximately 1" squares) and gently place them into the burner pan. Do not compress, leave it loose for best performance.
2. Fill the burner pan level with the top of the pan at rear, and gradually sloping forward down to the firebox floor at the front, covering both burner tubes.
3. Place remaining ember material outside of the burner pan as desired to cover-up gas lines and brackets.

Note:

Ember material placement and amount will affect flame appearance. More ember material results in lower flame height. Add or remove as needed until desired flame affect. Reduce the amount used on Propane models, as too much will create soot.

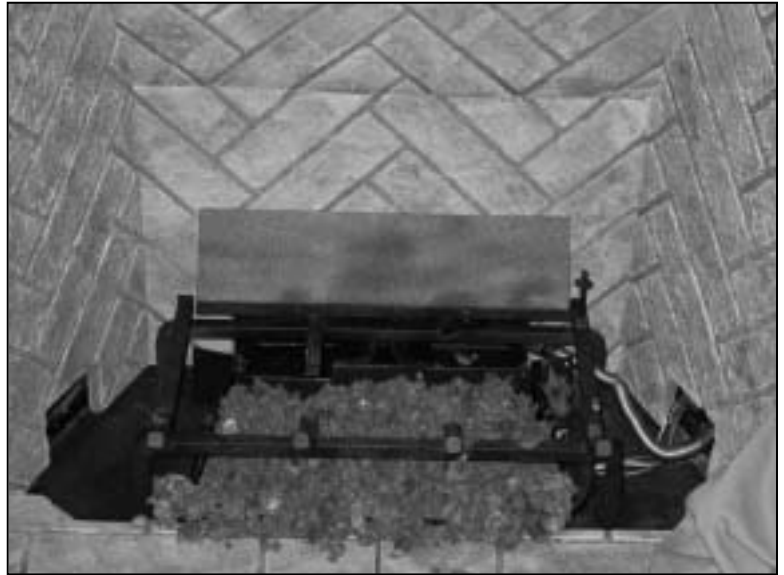


Fig. #6

Log Set Assembly

The logs are packaged in a foam pack inside the box and are fragile, and should be handled with care. Unpack and inspect log set. There should be a total of seven logs. Gas plumbing and vent connections should be completed before proceeding.

Position the logs as indicated by the pictures on page 5. The three main logs have holes and/or pins. Engage each pin in the corresponding holes. The four smaller logs do not have holes or pins. They rest in position. Locate as per the diagrams (Fig. #6-13).

Note:

Improper placement of logs may cause sooting on internal parts and glass. The logs may need to be repositioned slightly to avoid excessive flame impingement.

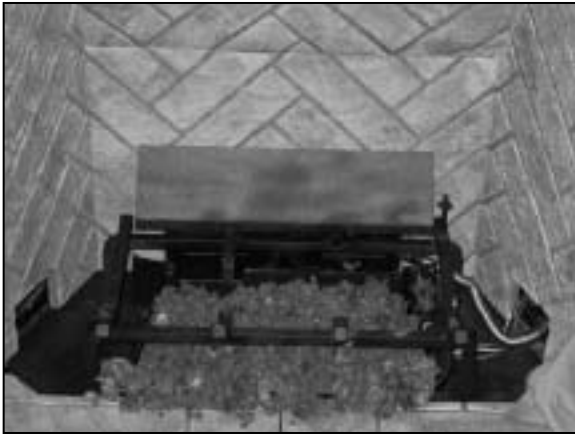


Fig. #6

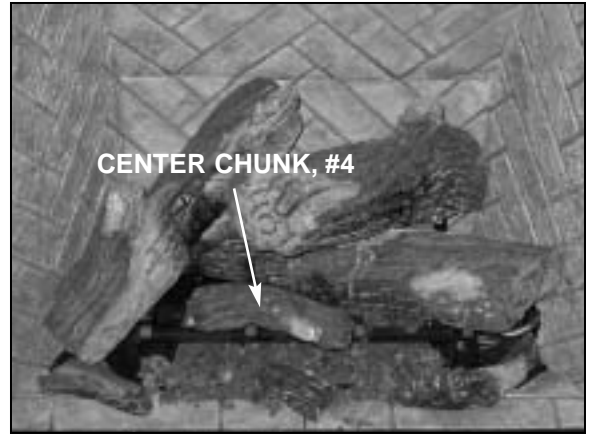


Fig. #10

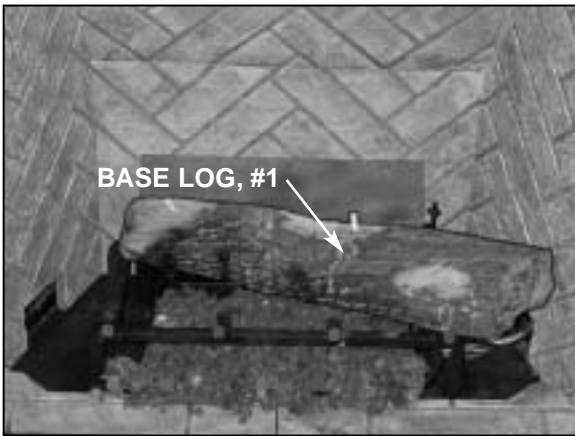


Fig. #7

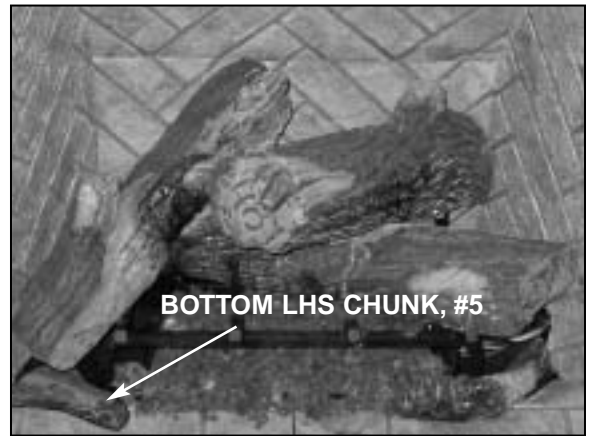


Fig. #11

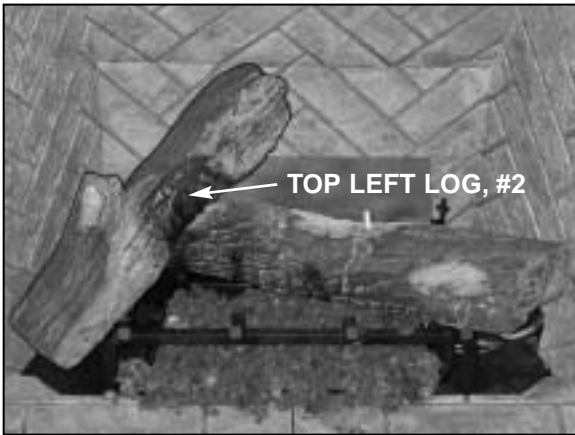


Fig. #8

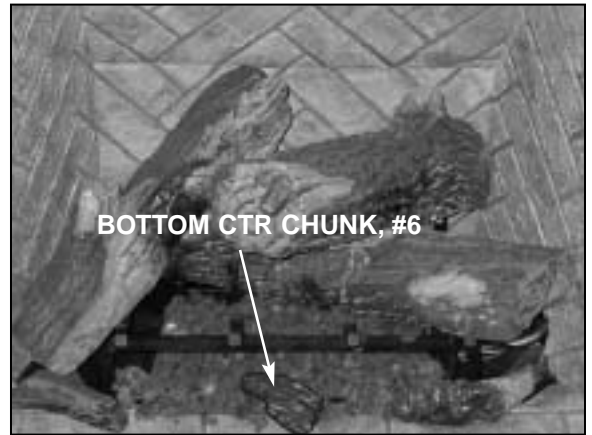


Fig. #12

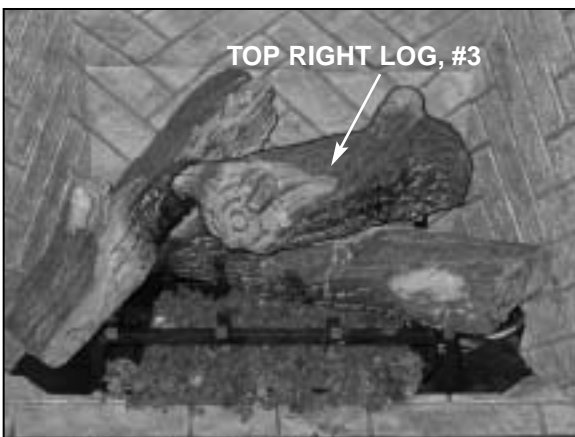


Fig. #9

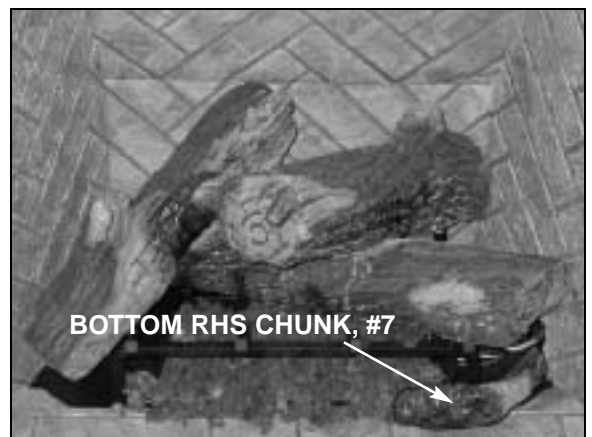


Fig. #13

Burner Flame Adjustment

The air shutter on the burner tube controls the primary combustion air to the gas burner and is preset at the factory for natural gas fuel. Some adjustment may be necessary to obtain desired flame and to eliminate carbon deposits. Evaluate flame appearance after the fireplace has reached operating temperature. See Fig. #14 for proper flame pattern.

Open primary air if the logs, glass, and firebox have carbon accumulation and/or the flames are long, dark and stringy. The shutter may also be opened to enhance the ember material glow and lessen the flame height.

Caution: Burner area may be hot! Turn off the fireplace and allow the unit to cool before proceeding.

To Adjust:

1. Open and remove window frame and set aside. See "Window Frame Removal" section found in the installation and operating instructions manual.
2. Remove the log set and set aside.
3. Remove baffle from log grate (2 screws)
4. Loosen the screw in the primary air Shutter.
5. Rotate the shutter to increase or decrease the amount of primary air.
6. Reassemble in reverse order.



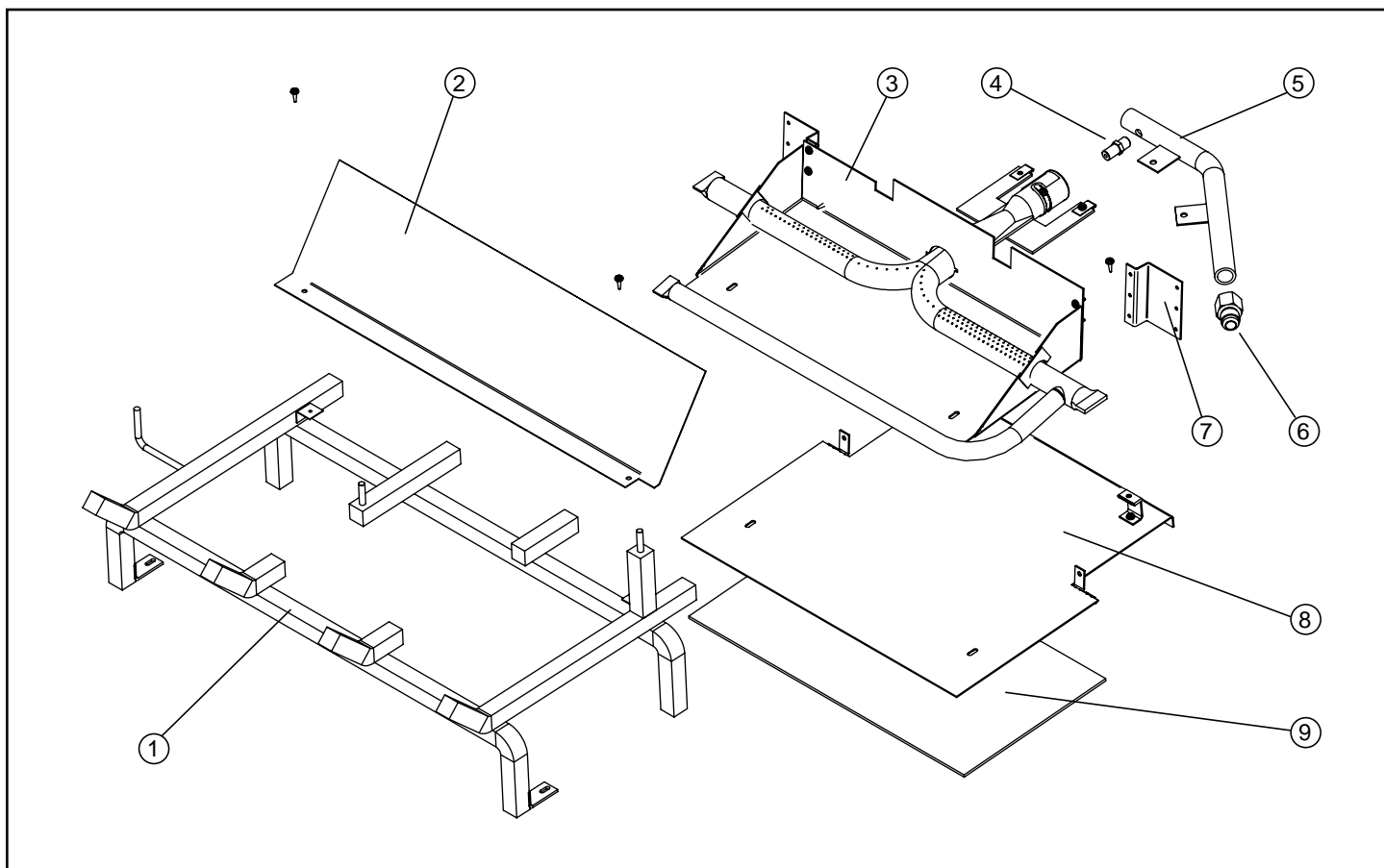
Fig. #14

Caution:
Proper air shutter setting is a must.

The flame should be just orange and "lazy". It should **NEVER** be set to create soot on internal parts and glass.

Replacement Parts

ITEM	PART NUMBER	DESCRIPTION
1	TC42.90821WLD	LOG GRATE
2	9082.1	NG02 AIR DEFLECTOR - Black Painted
	9082.2	NG02 AIR DEFLECTOR - Porcelain Black (not shown in diagram)
3	TC42.90859	BURNER TRAY
4	5022.12	ORIFICE, NG
	5021.31	ORIFICE, LP
5	TC42.90881	MANIFOLD
6	5019.221	DORMONT FITTING
7	9085.8	PILOT SHIELD
8	9089.01	BURNER TRAY SUPPORT SHIELD
9	9047	BURNER TRAY SHIELD GASKET
	5098.311	LOG SET, COMPLETE
	5098.311.1	BASE LOG, #1 (shown in Fig.#7)
	5098.311.2	TOP LEFT LOG, #2 (shown in Fig.#8)
	5098.311.3	TOP RIGHT LOG, #3 (shown in Fig.#9)
	5098.311.4	CENTER CHUNK, #4 (shown in Fig.#10)
	5098.311.5	BOTTOM LHS CHUNK, #5 (shown in Fig.#11)
	5098.311.6	BOTTOM CTR CHUNK, #6 (shown in Fig.#12)
	5098.311.7	BOTTOM RHS CHUNK, #7 (shown in Fig.#13)





TOWN & COUNTRY
FIREPLACES™

TOWN & COUNTRY FIREPLACES
www.townandcountryfireplaces.net

Toll Free: 1-888-223-0088

2975 Allenby Road, Duncan, BC Canada V9L 6V8