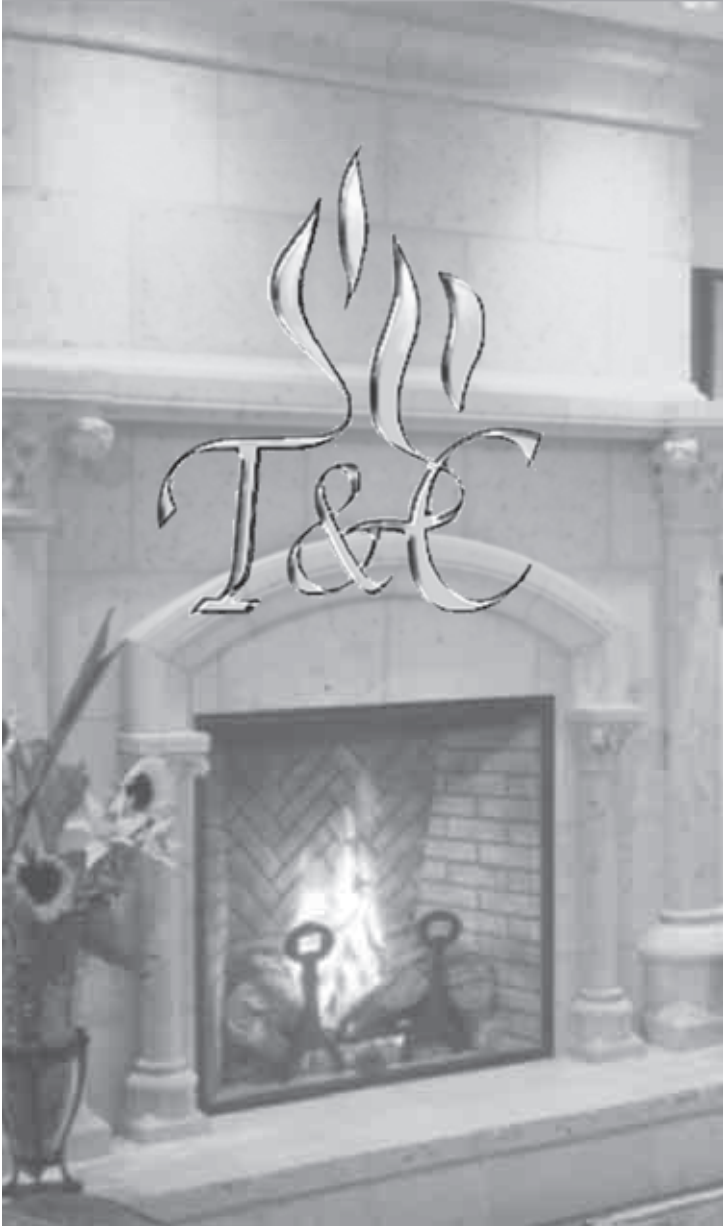


**IMPORTANT:
THESE INSTRUCTIONS ARE TO REMAIN
WITH THE APPLIANCE INSTRUCTIONS**

These instructions are supplementary to the Installation and Operating Instructions supplied with the fireplace and should be kept together. Refer to the Installation and Operating Instructions for proper gas supply, safety requirements and operating instructions.



**TOWN & COUNTRY
FIREPLACES™**

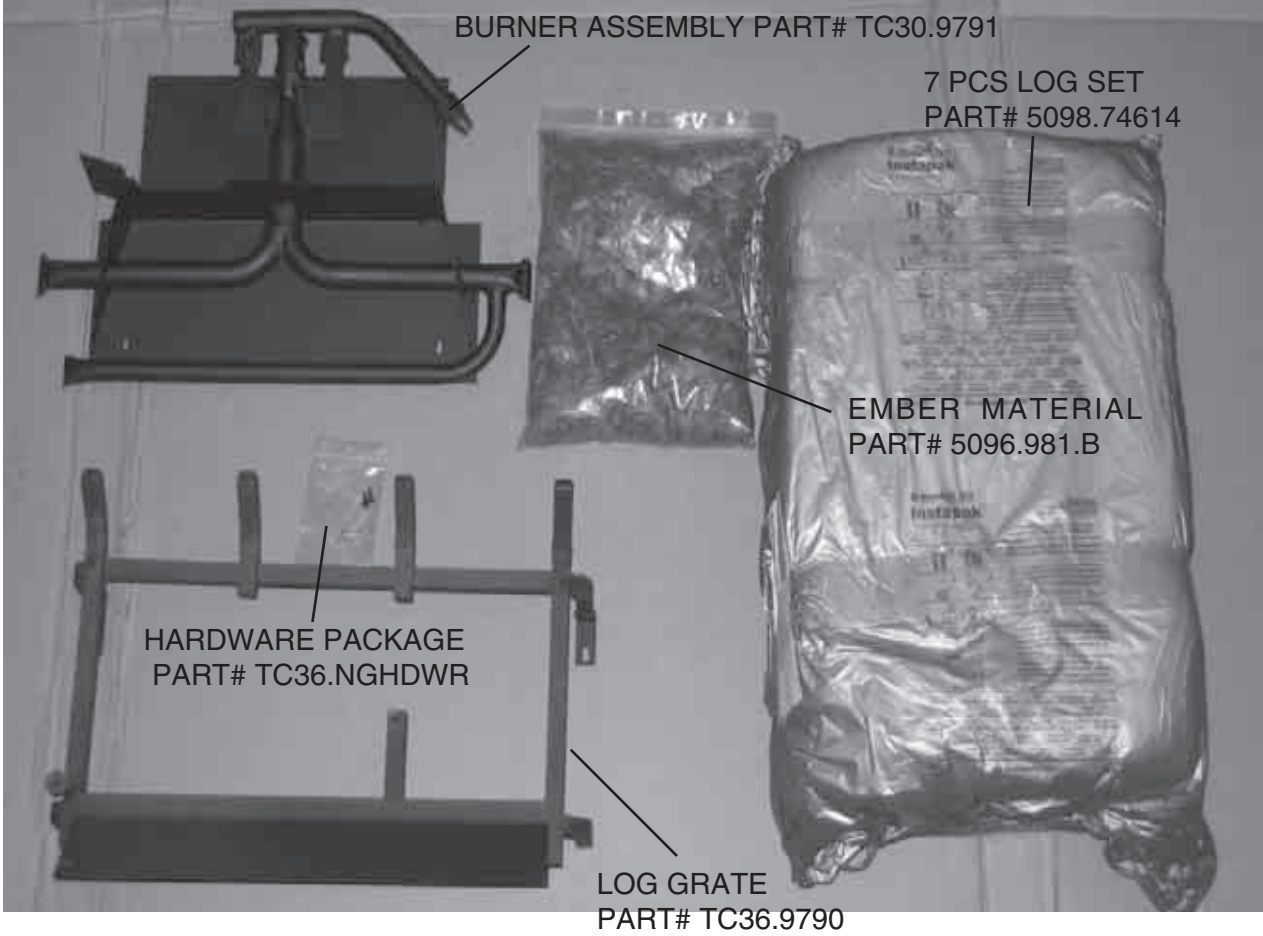
TC30 COUNTRY HOME BURNER KIT INSTRUCTIONS



**PART#
TC30.NG02.C
FOR TC30**

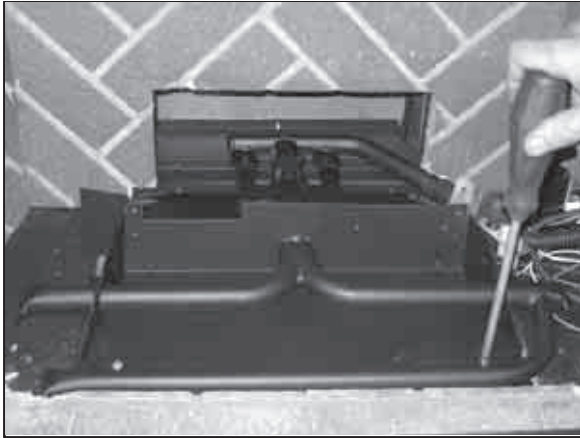


Contents of Package



Burner/Grate Installation

Fig #1



- 1) Attach the burner assembly to the floor shield in the bottom of the firebox with two screws ensuring that the front edge of the burner is flush with the front of the shield. (fig. # 1).

- 3) Connect flex lines from the manifold and pilot assemblies to the connection in the firebox side and ensure the connection is gas tight. (Fig. # 2)



Fig #2

- 4) Position the grate in the slots of the burner tray and attach to the floor shield with two screws through holes located behind the front legs of the grate. (Fig. # 3)

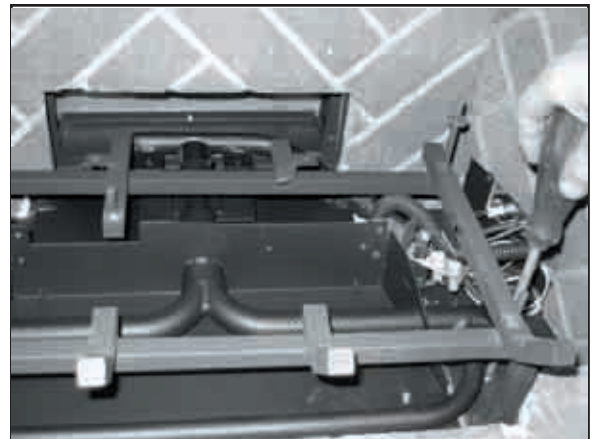


Fig #3

- 5) Attach air deflector to rear of grate with two screws (Fig. # 4)



Fig #4

Ember Material

A large bag of ember material is shipped with the fireplace and needs to be installed to ensure optimum performance and flame appearance.

- 1) Pull apart the material into ember size pieces (approximately 1" squares) and gently place them into the burner pan. Do not compress, leave them loose for best performance.
- 2) Fill the burner pan with embers until they are level with the top of the pan at rear, and gradually sloping forward down to the firebox floor at the front, covering both burner tubes.
- 3) Place remaining ember material outside of the burner pan as desired to cover-up gas lines and brackets.

Note: Ember material placement and amount will affect flame appearance. More ember material results in lower flame height. Add or remove as needed until desired flame affect.
Reduce the amount used on Propane models, as too much will create soot.



Fig #5

Log Set Assembly

The logs are packaged in a foam pack inside the box and are fragile, and should be handled with care. Unpack and inspect log set. There should be a total of 7 logs. Gas plumbing and vent connections should be completed before proceeding.

Position the logs as indicated by the following pictures on page 5. The three main logs have holes and /or pins. Engage each pin in the corresponding holes. The four smaller logs do not have holes or pins. They rest in position. Locate as per the diagrams. (Fig. # 6-13)



Fig #6



Fig #10



Fig #7



Fig #11



Fig #8



Fig #12



Fig #9



Fig #13

Burner Flame Adjustment

The air shutter on the burner tube controls the primary combustion air to the gas burner and is preset at the factory for natural gas fuel. Some adjustment may be necessary to obtain desired flame and to eliminate carbon deposits. Evaluate flame appearance after the fireplace has reached operating temperature. See Fig. #14 for proper flame pattern.

Open primary air if the logs, glass, and firebox have carbon accumulation and/or the flames are long, dark and stringy. The shutter may also be opened to enhance the ember material glow and lessen the flame height.

Caution: Burner area may be hot!
Turn off the fireplace and allow the unit to cool before proceeding.

To Adjust:

- 1) Open and remove window frame and set aside.
See "Window Frame Removal" section found in the Installation and Operating Instructions manual.
- 2) Remove the log set and set aside.
- 3) Remove baffle from log grate (2 screws)
- 4) Loosen the screw in the Primary Air Shutter.
- 5) Rotate the shutter to increase or decrease the amount of primary air.
- 6) Reassemble in reverse order.



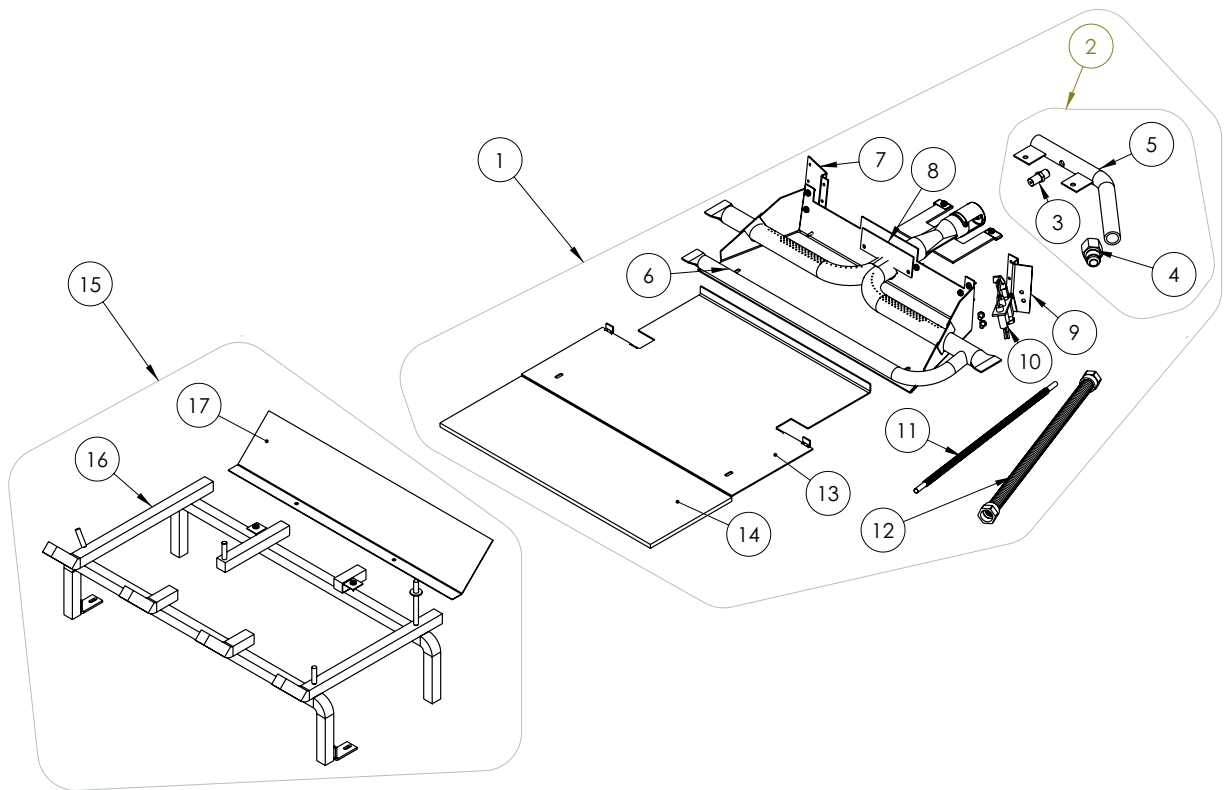
Fig #14

Caution:
Proper air shutter setting is a must.

The flame should be just orange and "lazy".
It should **NEVER** be set to create sooting on internal parts and glass.

Replacement Parts

1.....	BURNER ASSEMBLY	TC30.9791
2.....	MANIFOLD ASSEMBLY.....	TC30.9788
3.....	ORIFICE, NATURAL GAS (#32)	5021.332.A
	ORIFICE, PROPANE (#48).....	5021.3407
4.....	1/2 PIPE TO 1/2 TUBE CONNECTION.....	5019.221
5.....	MANIFOLD.....	TC36.9788WLD
6.....	BURNER TRAY	TC36.9791WLD
7.....	PILOT SHIELD	9780.01
8.....	BLOCKER PLATE	9791.1
9.....	PILOT BRACKET	9279
10.....	PILOT	5005.025
11.....	PILOT TUBE.....	5019.225
12.....	MAIN SUPPLY TUBE.....	5019.223
13.....	HEAT SHIELD	9789.01
14.....	HEAT SHIELD INSULATION	9789.5
15.....	GRATE ASSEMBLY.....	TC36.9790
16.....	GRATE	TC36.9790WLD
17.....	AIR BAFFLE	9782
	EMBER MATERIAL.....	5096.981.B
	7 PCS LOG SET.....	5098.74614
	BASE LOG, #1 (shown in fig #9).....	5098.746141
	TOP LEFT LOG, #1 (shown in fig #10)	5098.746142
	TOP RIGHT LOG, #1 (shown in fig #11)	5098.746143
	CENTER CHUNK, #1 (shown in fig #12).....	5098.746144
	BOTTOM LHS CHUNK, #1 (shown in fig #14)	5098.746145
	BOTTOM CENTER CHUNK, #1 (shown in fig #15)	5098.746146
	BOTTOM RHS CHUNK, #1 (shown in fig #13)	5098.746147





TOWN & COUNTRY
FIREPLACES™

2975 Allenby Rd., Duncan, BC V9L 6V8

Phone: 1-888-223-0088

Web site: www.townandcountryfireplaces.net