



TOWN & COUNTRY
FIREPLACES™

TC36 COUNTRY HOME BURNER KIT TC36.NG02.C

PACKAGE CONTENTS:

- BURNER ASSEMBLY (including pilot and manifold)
- LOG GRATE
- TC36 LOGS
- EMBER MATERIAL
- HARDWARE PACKAGE
- AIR DEFLECTOR



These instructions are supplementary to the Installation and Operating Instructions supplied with the fireplace and should be kept together. Refer to the Installation and Operating Instructions for proper gas supply, safety requirements and operating instructions.

**IMPORTANT: THESE INSTRUCTIONS
ARE TO REMAIN WITH THE
APPLIANCE INSTRUCTIONS**



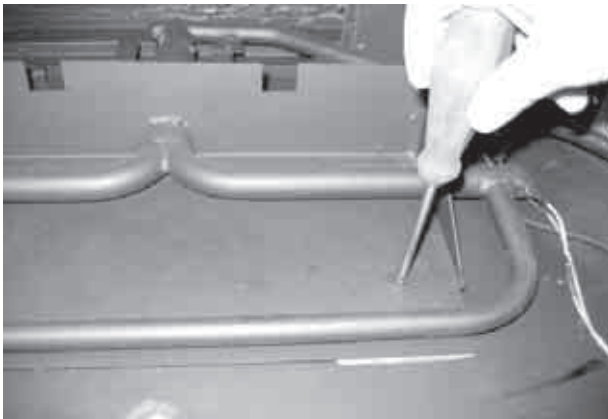
BURNER / GRATE INSTALLATION

- 1) Attach the burner assembly to the floor shield in the bottom of the firebox with two screws. Ensure that the front edge of the burner is flush with the front of the shield. (Fig. # 1)
- 2) Attach the manifold supply tube to the bulk head fitting and tighten. (Fig. # 2) Ensure that there are no leaks.
- 3) Attach the pilot supply tube to the bulk head fitting and tighten. (Fig. # 3) Ensure there are no leaks.
- 4) Attach spark electrode (ORANGE) and sensor leads to the electrical bulk head. (Fig. # 4) (The spark electrode connection has a red dot above it)

A panel set must now be installed. See Installation and Operating Instructions manual for details.

- 5) If this fireplace is to be fueled by propane, remove the baffle on the rear right hand side of the burner tray. (Fig. # 5)
- 6) Position the slots of the grate securing brackets over the holes in the floor shield and secure with the two screws. (Fig. # 6)
- 7) Attach rear deflector to rear of grate using the two screws provided. (Fig. # 7)

Fig. # 1



BURNER TRAY INSTALLATION

Fig. # 2



Fig. # 3

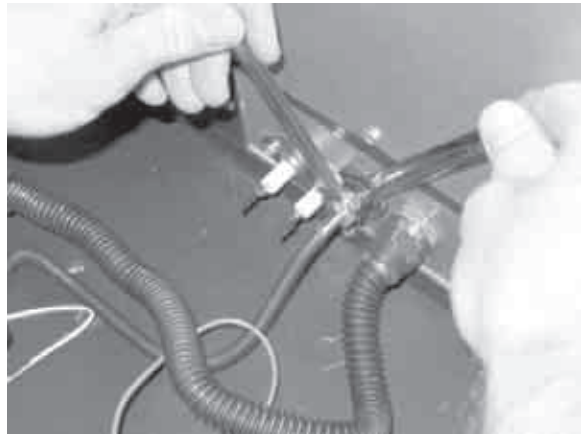


Fig. # 4

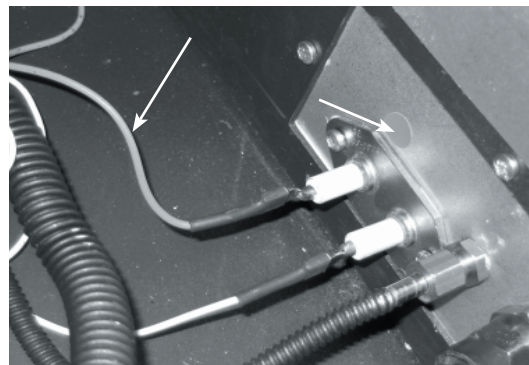


Fig. # 5

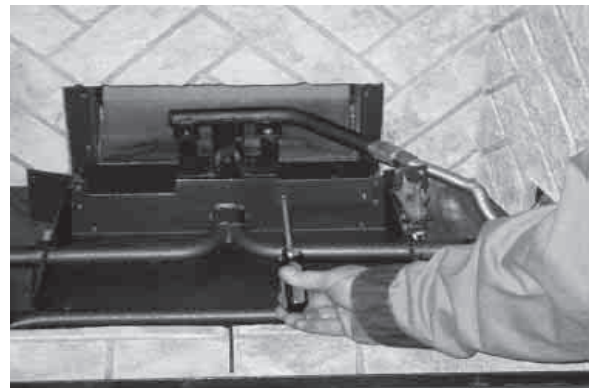


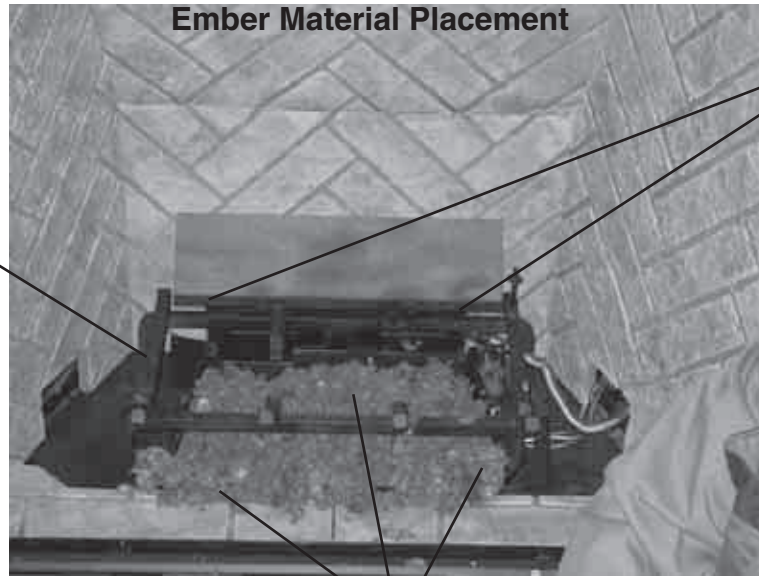
Fig. # 6



GRATE INSTALLATION

Fig. # 7

**LOG
GRATE**



**AIR DEFLECTOR
SECURING
SCREWS**

GLOWING EMBERS

EMBER MATERIAL

A large bag of ember material is shipped with the fireplace and needs to be installed to ensure optimum performance and flame appearance.

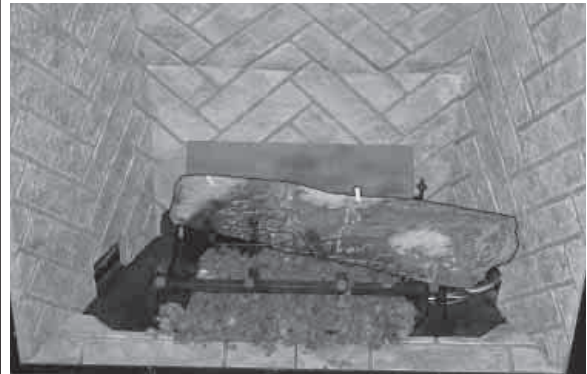
Pull apart the material into ember size pieces (approximately 1" squares) and gently place them into the burner pan. Do not compress, leave it loose for best performance.

Fill the burner pan level with the top of the pan at rear, and gradually sloping forward down to the firebox floor at the front, covering both burner tubes.

Place remaining ember material outside of the burner pan as desired to cover-up gas lines and brackets.

Note: Ember material placement and amount will affect flame appearance. More ember material results in lower flame height. Add or remove as needed until desired flame affect.

Fig. # 8



LOG SET ASSEMBLY

Gas plumbing and vent connections should be completed before proceeding.

The logs are packaged in a foam pack inside the box, are fragile, and should be handled with care. Unpack and inspect log set. There should be a total of seven logs.

Position the logs as indicated by the following pictures. The three main logs have holes and / or pins. Engage each pin in the corresponding holes. The four smaller logs do not have holes or pins. They rest in position. Locate as per the diagrams (fig. # 8-14)

Fig. # 9

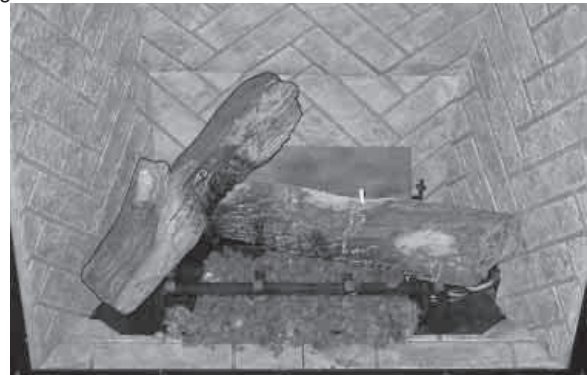


Fig. #10



Fig. #12



Fig. #11

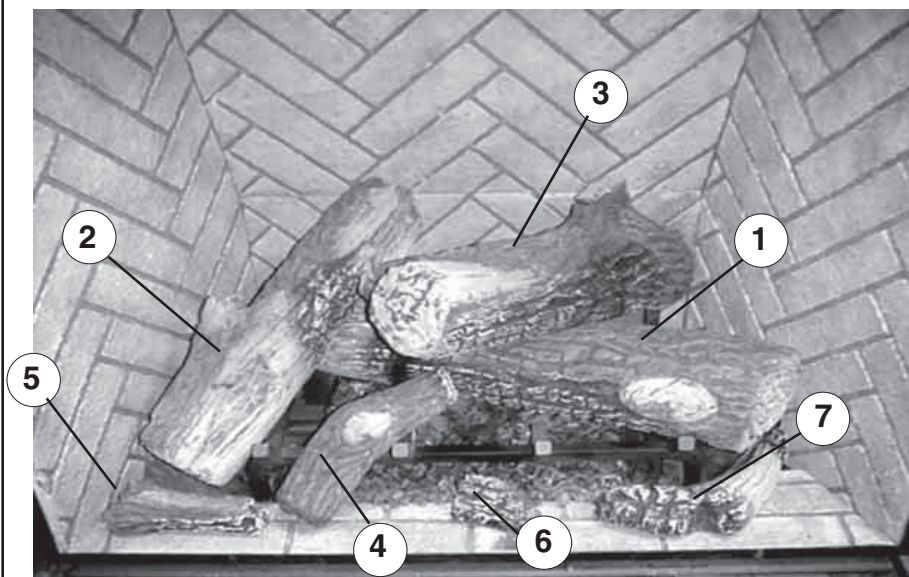


Fig. #13



Note: Improper placement of logs will cause sooting on internal parts and glass. The logs may need to be repositioned slightly to avoid excessive flame impingement.

Fig. #14



BURNER FLAME ADJUSTMENT

The air shutter on the burner tube controls the primary combustion air to the gas burner and is pre-set closed at the factory for natural gas fuel. Some adjustment may be necessary to obtain desired flame and to eliminate carbon deposits. Evaluate flame appearance after the fireplace has reached operating temperature. See Fig. #15 for proper flame pattern.

Open primary air shutter if the logs, glass, and firebox have carbon accumulation and / or the flames are long, dark and stringy. The shutter may also be opened to enhance the Ember Material glow and lessen the flame height.

Caution: Burner area may be hot!

Turn off the fireplace and allow the unit to cool before proceeding.

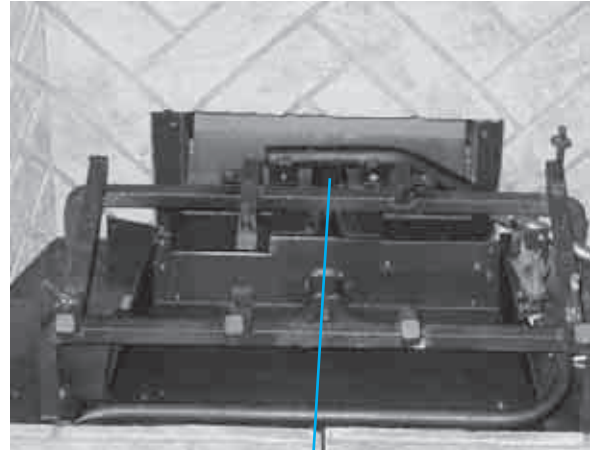
To Adjust: (See Fig. # 16)

- 1) Open and remove window frame and set aside. See "Window Frame Removal" section found in the Installation and Operating Instructions manual.
- 2) Remove the log set and set aside.
- 3) Remove the air deflector from the log grate.
- 4) Loosen the screw in the Primary Air Shutter.
- 5) Rotate the shutter to increase or decrease the amount of primary air.
- 6) Re assemble in reverse order.

Caution: Proper air shutter setting is a must.

The flame should be just orange and "lazy". It should NEVER be set to create sooting on internal parts and glass.

Fig. # 16



PRIMARY AIR SHUTTER

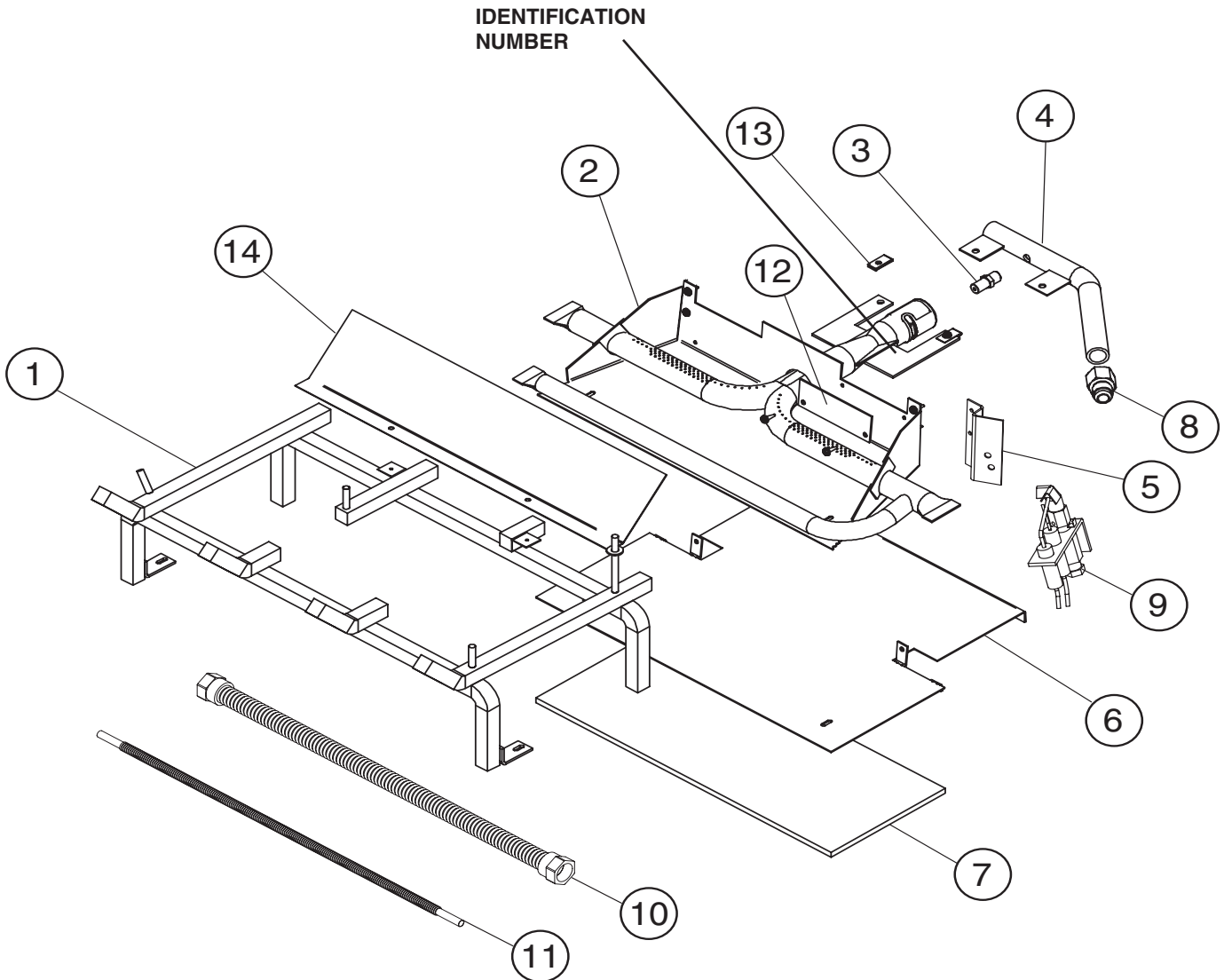
Fig. # 15



REPLACEMENT PARTS

ITEM.....	DESCRIPTION.....	PART NO.
1.....	LOG GRATE	TC36.9790WLD
2.....	BURNER TRAY	TC36.9791WLD
3.....	ORIFICE, NG	5022.13
.....	ORIFICE, LP	5022.34
4.....	MANIFOLD.....	TC36.9788
5.....	TCCV PILOT BRACKET	9279
6.....	BURNER TRAY SUPPORT SHIELD	9789.01
7.....	BURNER TRAY SHIELD GASKET.....	9789.5
8.....	DORMONT FITTING.....	5019.221
9.....	PILOT ASSEMBLY	5005.025

ITEM.....	DESCRIPTION.....	PART NO.
10...	1/2" FLEX TUBE	5019.223
11...	1/4" FLEX TUBE	5019.225
12...	AIR BLOCKER PLATE	9791.1
13...	SPRING NUT.....	5044
14...	AIR DEFLECTOR	9082
.....	LOG SET, COMPLETE.....	5098.746108
.....	REAR, #1 (shown in fig.#14)	5098.746105
.....	LEFT, #2 (shown in fig.#14)	5098.746106
.....	RIGHT, #3 (shown in fig.#14).....	5098.746107
.....	MIDDLE, #4 (shown in fig.#14).....	5098.746102
.....	BOTTOM LEFT, #5 (shown in fig.#14)...	5098.746103
.....	BOTTOM CENTRE, #6 (shown in fig.#14)	5098.746104
.....	BOTTOM RIGHT, #7 (shown in fig.#14)	5098.746101



NOTES:



TOWN & COUNTRY
FIREPLACES™

TECHNICAL SUPPORT: 1-877-715-2664
townandcountryfireplaces.net
2975 Allenby Rd., Duncan, BC V9L 6V8