

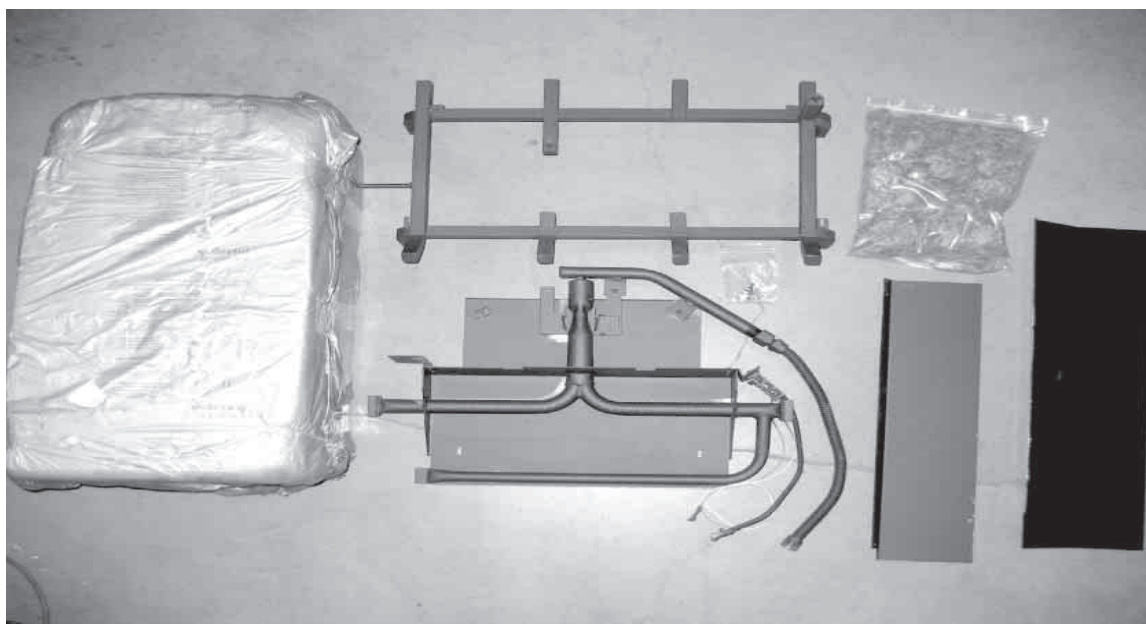


TOWN & COUNTRY
FIREPLACES™

TC42 COUNTRY HOME BURNER KIT TC42.NG02.C

PACKAGE CONTENTS:

- BURNER ASSEMBLY (including pilot and manifold)
- LOG GRATE
- TC42 LOGS
- EMBER MATERIAL
- HARDWARE PACKAGE
- AIR DEFLECTOR (PAINTED)
- AIR DEFLECTOR (PORCELAIN)



These instructions are supplementary to the Installation and Operating Instructions supplied with the fireplace and should be kept together. Refer to the Installation and Operating Instructions for proper gas supply, safety requirements and operating instructions.

**IMPORTANT: THESE INSTRUCTIONS
ARE TO REMAIN WITH THE
APPLIANCE INSTRUCTIONS**



BURNER / GRATE INSTALLATION

- 1) Attach the burner assembly to the floor of the firebox with two screws. (Fig. # 1)
- 2) Attach the manifold supply tube to the bulk head fitting and tighten. (Fig. # 2) Ensure that there are no leaks.
- 3) Attach the pilot supply tube to the bulk head fitting and tighten. (Fig. # 3) Ensure there are no leaks.
- 4) Attach spark electrode (ORANGE) and sensor leads to the electrical bulk head. (Fig. # 4) (The spark electrode connection has a red dot above it)

A panel set must now be installed. See Installation and Operating Instructions manual for details.

- 5) Position the grate in the slots of the burner tray and attach to the floor with two screws through holes located behind the front legs of the grate. (Fig. # 5)
- 6) Attach rear deflector (painted or porcelain) to rear of grate using the two screws provided. (Fig. # 6)

Fig. # 1



BURNER TRAY INSTALLATION

Fig. # 2



Fig. # 3



Fig. # 4

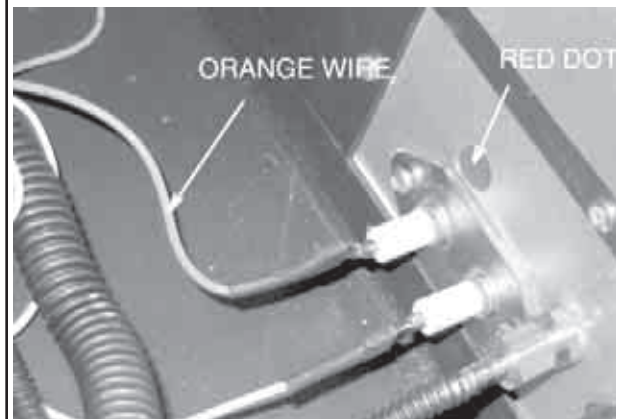


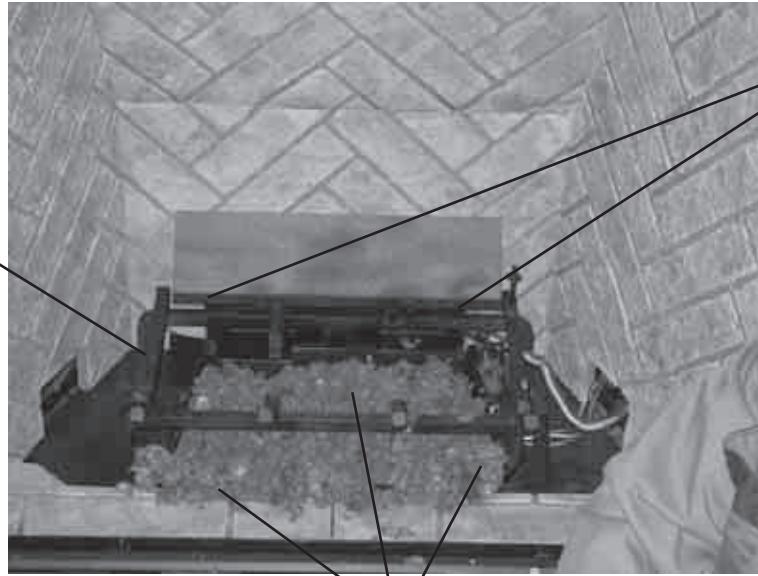
Fig. # 5



GRATE INSTALLATION

Fig. # 6

**LOG
GRATE**



**AIR DEFLECTOR
SECURING
SCREWS**

GLOWING EMBERS

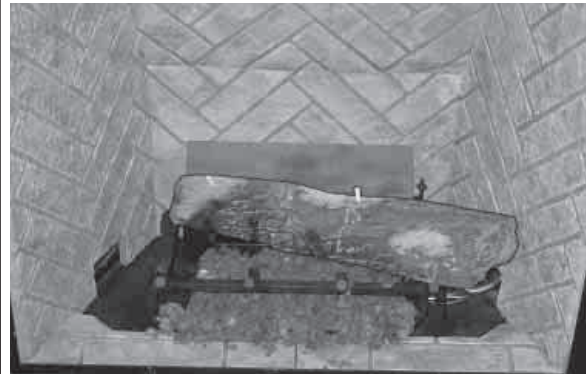
EMBER MATERIAL

A large bag of ember material is shipped with the fireplace and needs to be installed to ensure optimum performance and flame appearance.

Pull apart the material into ember size pieces (approximately 1" squares) and gently place them into the burner pan. Do not compress, leave it loose for best performance. Fill the burner pan level with the top of the pan at rear, and gradually sloping forward down to the firebox floor at the front, covering both burner tubes. Place remaining ember material outside of the burner pan as desired to cover-up gas lines and brackets.

Note: Ember material placement and amount will affect flame appearance. More ember material results in lower flame height. Add or remove as needed until desired flame affect.

Fig. # 7



LOG SET ASSEMBLY

The logs are packaged in a foam pack inside the box, are fragile, and should be handled with care. Unpack and inspect log set. There should be a total of seven logs. Gas plumbing and vent connections should be completed before proceeding.

Position the logs as indicated by the following pictures. The three main logs have holes and / or pins. Engage each pin in the corresponding holes. The four smaller logs do not have holes or pins. They rest in position. Locate as per the diagrams (Fig. # 7-14)

Note: Improper placement of logs will cause sooting on internal parts and glass. The logs may need to be repositioned slightly to avoid excessive flame impingement.

Fig. # 8

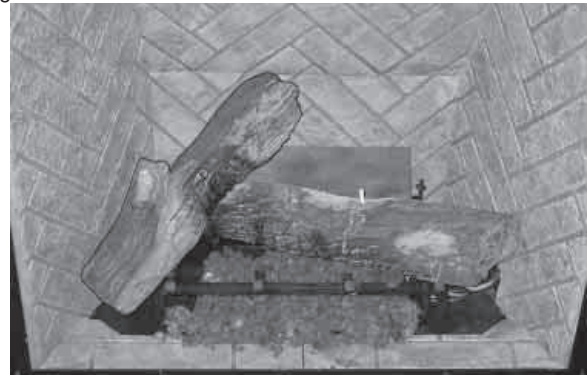


Fig. #9



Fig. #11



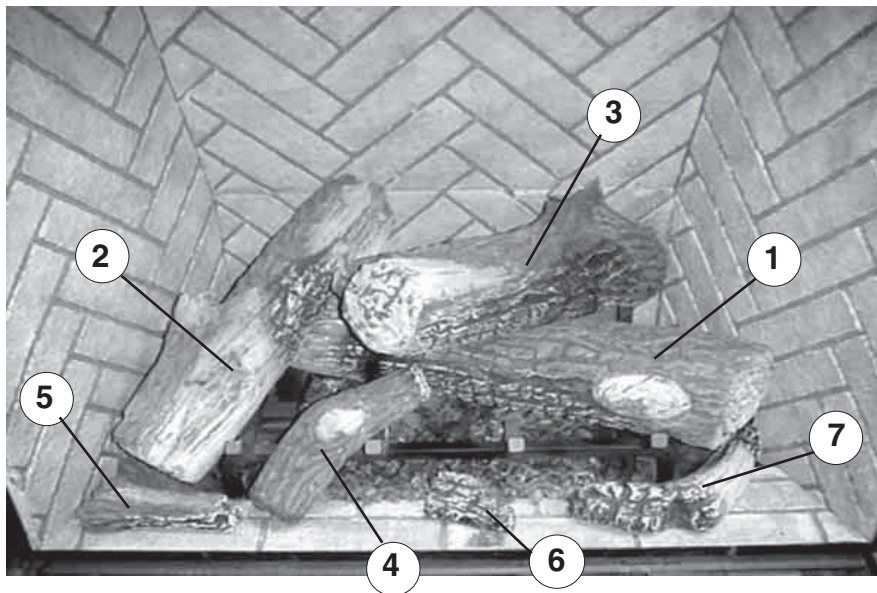
Fig. #10



Fig. #12



Fig. #13



BURNER FLAME ADJUSTMENT

The air shutter on the burner tube controls the primary combustion air to the gas burner and is pre-set closed at the factory for natural gas fuel. Some adjustment may be necessary to obtain desired flame and to eliminate carbon deposits. Evaluate flame appearance after the fireplace has reached operating temperature. See Fig. #14 for proper flame pattern.

Open primary air shutter if the logs, glass, and firebox have carbon accumulation and / or the flames are long, dark and stringy. The shutter may also be opened to enhance the Ember Material glow and lessen the flame height.

Caution: Burner area may be hot!

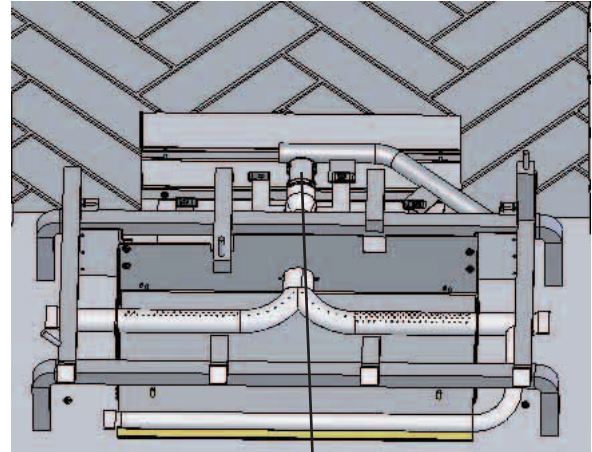
Turn off the fireplace and allow the unit to cool before proceeding.

To Adjust: (See Fig. # 15)

- 1) Open and remove window frame and set aside. See "Window Frame Removal" section found in the Installation and Operating Instructions manual.
- 2) Remove the log set and set aside.
- 3) Loosen the screw in the Primary Air Shutter.
- 4) Rotate the shutter to increase or decrease the amount of primary air.

The flame should be just orange and "lazy". It should NEVER be set to create sooting on internal parts and glass.

Fig. # 15



PRIMARY AIR SHUTTER

Fig. # 14

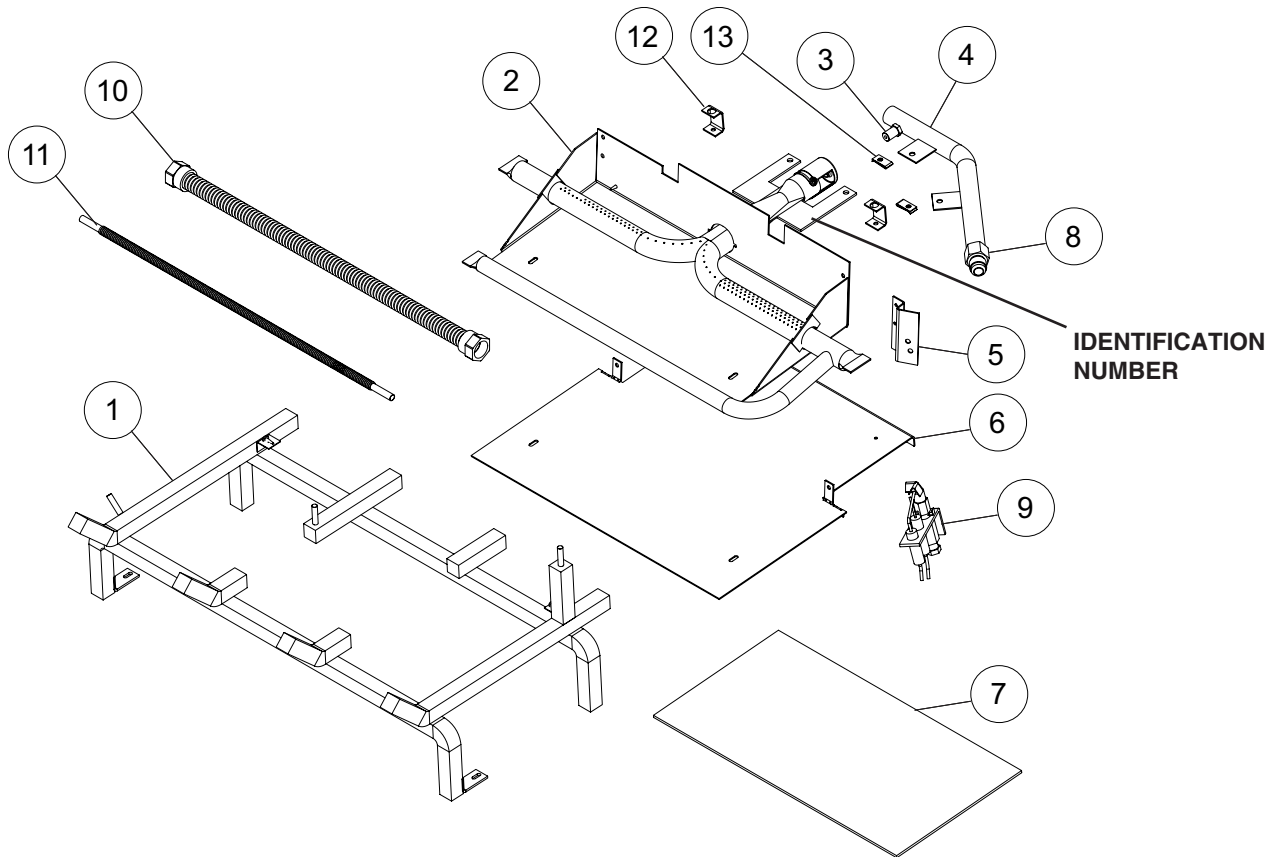


REPLACEMENT PARTS

ITEM.....	DESCRIPTION.....	PART NO.
1.....	LOG GRATE	TC42.90821
2.....	BURNER PAN.....	*TC42.90859
3.....	ORIFICE, NG	5022.12
	ORIFICE, LP	5022.31
4.....	MANIFOLD.....	TC42.90881
5.....	TCCV PILOT BRACKET	*9279
6.....	BURNER TRAY SUPPORT SHIELD	*9089.01
7.....	BURNER TRAY SHIELD GASKET.....	*9047
8.....	DORMONT FITTING.....	5019.221
9.....	PILOT Assembly	5005.025

ITEM.....	DESCRIPTION.....	PART NO.
10...	1/2" FLEX TUBE	5019.223
11...	1/4" FLEX TUBE	5019.225
12...	MANIFOLD BRACKET	9085.601
13...	SPRING NUT.....	5044
14...	NG02 AIR DEFLECTOR (PAINTED).....	9082.1
	NG02 AIR DEFLECTOR (PORCELAIN).....	9082.2
	LOG SET, COMPLETE.....	5098.311
	REAR, #1 (shown in fig.#13)	5098.311.1
	LEFT, #2 (shown in fig.#13)	5098.311.2
	RIGHT, #3 (shown in fig.#13).....	5098.311.3
	MIDDLE, #4 (shown in fig.#13).....	5098.311.4
	BOTTOM LEFT, #5 (shown in fig.#13).....	5098.311.5
	BOTTOM CENTRE, #6 (shown in fig.#13).....	5098.311.6
	BOTTOM RIGHT, #7 (shown in fig.#13)....	5098.311.7

*Not sold separately



NOTES:



TOWN & COUNTRY
FIREPLACES™

TECHNICAL SUPPORT: 1-888-715-2664
www.townandcountryfireplaces.net
2975 Allenby Rd., Duncan, BC V9L 6V8