

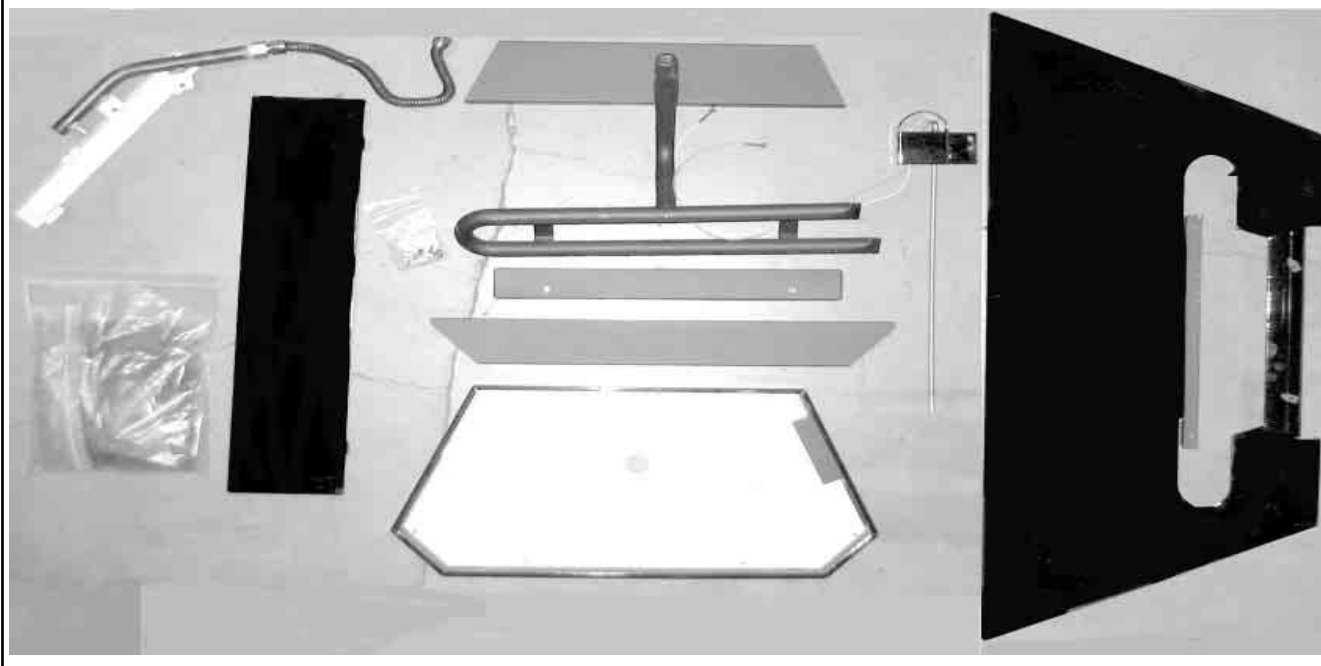


TOWN & COUNTRY  
FIREPLACES™

# TC42 BLACK DIAMOND BURNER KIT TC42.NG03.C

PACKAGE CONTENTS: NOTE: MUST BE USED WITH PORCELAIN PANELS #TC42.PNLPBKB

- BURNER
- BURNER TRAY ASSEMBLY
- TUMBLED GLASS
- BURNER SHIELD
- PANEL, lower rear
- MANIFOLD ASSEMBLY (including supply tube)
- PILOT SHIELD (including pilot and pilot supply tube)
- HARDWARE PACKAGE
- MEDIA SPACER, rear
- MEDIA SPACER, front
- MEDIA SPACER, center



**These instructions are supplementary to the Installation and Operating Instructions supplied with the fireplace and should be kept together. Refer to the Installation and Operating Instructions for proper gas supply, safety requirements and operating instructions.**

**IMPORTANT: THESE INSTRUCTIONS  
ARE TO REMAIN WITH THE  
HOMEOWNER**

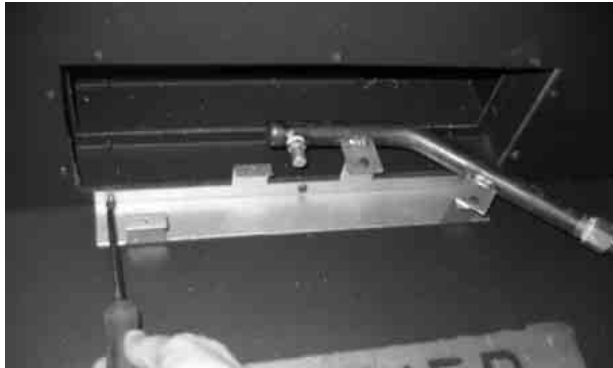


**A porcelain panel set must be used in conjunction with the installation of the burner assembly. See Installation and Operating Instructions manual for details.**

### **BLACK DIAMOND BURNER INSTALLATION**

- 1) Remove the three lower screws from the air channel at the back of the firebox and attach the manifold bracket to the back of the firebox. (Fig. # 1)
- 2) Attach the manifold supply tube to the bulk head fitting and tighten. (Fig. # 2) Ensure that there are no leaks.
- 3) Attach the pilot supply tube to the bulk head fitting and tighten. (Fig. # 3) Ensure there are no leaks.
- 4) Attach spark electrode (ORANGE) and sensor leads to the electrical bulk head. ( Fig. # 4) (The spark electrode connection has a red dot above it)
- 5) Panel clips must be installed on the bottom of both side panels (notch facing inside). (Fig. # 5) to ensure proper positioning of the burner shield. This must be done at the same time as installing the porcelain side panels.

*Fig. # 1*



**INSTALL MANIFOLD ASSEMBLY**

*Fig. # 2*



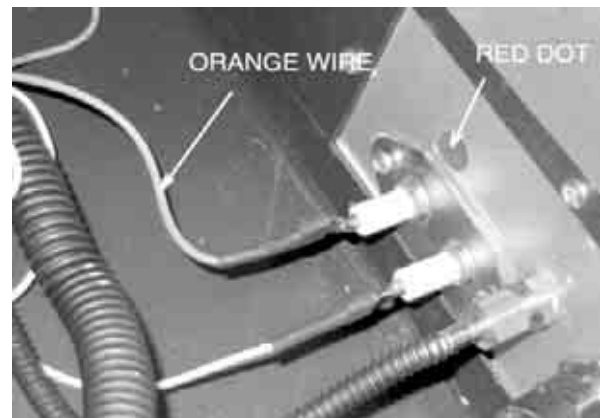
**ATTACH MANIFOLD SUPPLY TUBE**

*Fig. # 3*



**ATTACH PILOT SUPPLY TUBE**

*Fig. # 4*



**ATTACH SPARK ELECTRODE AND SENSOR LEADS**

*Fig. # 5*



**POSITIONING PANEL CLIPS**

- 6) Install rear panel of porcelain panel set. The base panel of the porcelain panel set is not used with the Black Diamond installation, and may be discarded.
- 7) Install burner shield by tipping the shield into the firebox, catching the folded edges in the panel clips. (Fig. # 6)
- 8) Position clip nuts, included in hardware package, onto burner shield. (Fig. # 7)
- 9) Attach the burner tray to the burner shield using two screws at the back of the tray. (Fig. # 8)
- 10) Attach pilot shield to burner tray with two screws. (Fig. # 9)

Fig. # 6



**INSTALLING BURNER SHIELD**

Fig. # 7



**INSTALLING BURNER SHIELD CLIP NUTS**

Fig. # 8



**BURNER TRAY PLACEMENT**

Fig. # 9



**PILOT SHIELD ATTACHMENT**

- 11) Install front & rear media spacers. (Fig. #10 & 11)

Fig. # 10



**REAR MEDIA SPACER**

Fig. # 11



**FRONT MEDIA SPACER**

- 12) Set the burner air shutter to fully open for propane or fully closed for natural gas.
- 13) Install burner by tilting burner inlet through tray. Ensure that the orifice has entered the inlet tube. (Fig. # 12 & 13)
- 14) Install the center media spacer and secure spacer to the tray with the two long screws provided. (Fig. # 14)
- 15) Install lower rear panel with two screws. (Fig. # 15)
- 16) Apply just enough tumbled glass to cover the burner assembly. (Fig. # 16)

**NOTE: Too much tumbled glass over the burner will cause sooting with the use of propane gas.**

**Unit is designed specifically to use tumbled glass part # 5012.01. Use of any other glass or material will void warranty.**

Fig. # 14



CENTRE MEDIA SPACER

Fig. # 12



BURNER INSTALLATION

Fig. # 15



LOWER REAR PANEL

Fig. # 13



BURNER INSTALLATION

Fig. # 16



TUMBLLED GLASS PLACEMENT

## BURNER FLAME ADJUSTMENT

The air shutter on the burner inlet tube controls the primary combustion air to the gas burner and is preset closed at the factory for natural gas fuel. Some adjustment may be necessary to obtain desired flame and to eliminate carbon deposits. Evaluate flame appearance after the fireplace has reached operating temperature. See Fig. #17 for proper flame pattern.

Open primary air shutter if the glass, and firebox have carbon accumulation and / or the flames are long, dark and stringy. The shutter may also be opened to lessen the flame height.

**Caution: Burner area may be hot!**

Turn off the fireplace and allow the unit to cool before proceeding.

**To Adjust:** (See Fig. # 18)

- 1) Open and remove window frame and set aside. See "Window Frame Removal" section found in the Installation and Operating Instructions manual.
- 2) Remove the lower rear panel and set aside.
- 3) Loosen the screw securing the primary air shutter.
- 4) Rotate the shutter to increase or decrease the amount of primary air.
- 5) Re tighten the primary air shutter.
- 6) Reinstall lower rear panel.

Fig. # 18



PRIMARY AIR SHUTTER

The flame should be just orange and "lazy". It should NEVER be set to create sooting on internal parts and glass.

Fig. # 17



## REPLACEMENT PARTS

**ITEM..... DESCRIPTION.....PART NO.**

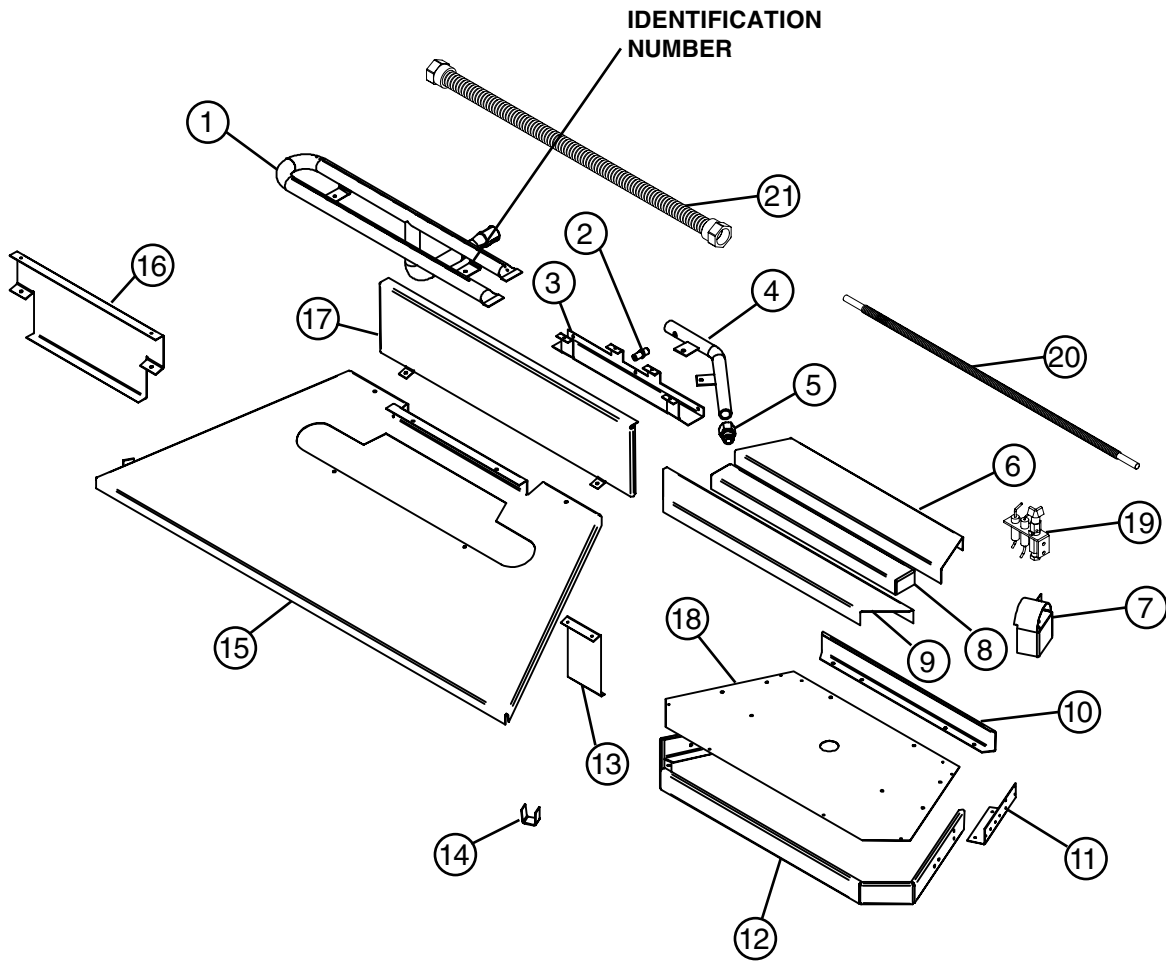
1.....	BURNER.....	TC42.5011832
2.....	ORIFICE, NG.....	5022.12
.....	ORIFICE, LP.....	5021.31
3.....	MANIFOLD STAND.....	*9640
4.....	MANIFOLD.....	TC42.90881
5.....	DORMONT FITTING.....	5019.221
6.....	MEDIA SPACER, REAR.....	*TC42.9645
7.....	PILOT SHIELD.....	TC36.9626PBK
8.....	MEDIA SPACER, CENTRE.....	*TC42.9647
9.....	MEDIA SPACER, FRONT.....	*TC42.9646
10.....	TRIM, REAR.....	*TC42.96445PBK

**ITEM..... DESCRIPTION.....PART NO.**

11.....	PILOT SUPPORT.....	*9625
12.....	TRIM, FRONT.....	*TC42.9644PBK
13.....	SHIELD LEG.....	*9620
14.....	PANEL CLIP.....	*9610
15.....	BURNER SHIELD.....	*TC42.9642PBK
16.....	TRAY SUPPORT.....	*TC42.96425
17.....	PANEL, LOWER RR.....	*TC42.9643PBK
18.....	BURNER TRAY BOTTOM.....	*9641
19.....	PILOT ASSEMBLY, CONVERTIBLE.....	5005.025
20.....	1/4" FLEX TUBE.....	5019.225
21.....	1/2" FLEX TUBE.....	5019.223

.....HARDWARE PACKAGE..... TC36.HK03  
 .....TUMBLED GLASS..... 5012.01

\*Not sold separately



**NOTES:**



TOWN & COUNTRY  
FIREPLACES™

**TECHNICAL SUPPORT: 1-888-715-2664**  
**[www.townandcountryfireplaces.net](http://www.townandcountryfireplaces.net)**  
**2975 Allenby Rd., Duncan, BC V9L 6V8**